

# BRIDAL & BANDS

---

January 2016



STULLER

# What's Shaping Bridal?

---

Stunning two-stone rings, two-tone engagement rings with embellished galleries, skinny classic bands, and detail rich bands that will allow your customers to celebrate their love — these major trends are driving bridal sales. We feature all of them in eye-catching new designs, along with bestsellers, flexible 3C designs, and updated classics. Let these pages inspire you, and you'll be more than ready for each bridal couple you see through Valentine's Day and on into bridal season.



- A. **122934** Round-Shape Two-Stone Semi-Mount Ring,  $\frac{1}{2}$  ct center (4.4mm center stones),  $\frac{1}{4}$  CTW, 14kt white, 32, size 7, **\$1,375**. Mounting #122934. | B. **122004** Round-Shape Six-Prong Solitaire Mounting,  $\frac{3}{4}$  ct center (5.8mm), 14kt white, size 7, **\$395**

Center diamond sold separately unless otherwise noted.





C. **122846** Diamond Anniversary Band,  $\frac{3}{4}$  CTW, 14kt white, 22, size 7, **\$2,375**. Mounting #122846. | D. **51577** Low Dome Sculptural Relief Pattern Band, 4mm, 14kt yellow, size 11, **\$965** | E. **122788** Diamond Anniversary Band,  $\frac{1}{10}$  CTW, 14kt white, 32, size 11, **\$1,185**. Mounting #122788. F. **MG** Milgrain Band, 4mm, 14kt white, size 7, **\$429**

## IN THIS BROCHURE

- PAGE 4 Two-Stone Rings: Hot Trend
- PAGE 8 Essentials: Engagement Rings and Diamond Bands
- PAGE 20 Essential Bands: Classics and Skinny Classics
- PAGE 24 Platinum: New and Best-Selling Styles
- PAGE 30 Embellished Galleries/Two-Tone Styles
- PAGE 42 Bliss On A Budget: Styles Under \$1,299
- PAGE 46 Anniversary and Eternity Bands: For That Special Occasion
- PAGE 62 Ever&Ever™: Sell Custom Bridal Easily

To view online, visit [Stuller.com/BridalStyles](https://www.stuller.com/BridalStyles).



Look for these badges throughout the brochure.

# Two-Stone Bridal Rings

---

One stone for a soulmate, one for a true love — without a doubt, two-stone rings are a big bridal trend. These new asymmetrical designs communicate this loving message, drawing the eye with their flow and light.



A. **652211** Round-Shape Two-Stone Semi-Mount Ring,  $\frac{1}{2}$  ct center stones (5.2mm),  $\frac{1}{3}$  CTW, 14kt white, 109, size 7, **\$1,495** | B. **122927** Round-Shape Two-Stone Semi-Mount Ring,  $\frac{1}{3}$  ct center stones (4.4mm),  $\frac{1}{5}$  CTW, 14kt white, 32, size 7, **\$1,369**. Mounting #122927.

C. **122929** Round-Shape Two-Stone Ring Mounting,  $\frac{1}{3}$  ct center stones (4.4mm), 14kt white, 32, size 7, **\$525** | D. **122929** Matching Band, 14kt white, size 7, **\$365**

Center diamond sold separately unless otherwise noted.

Visit [Stuller.com/TwoStoneBridal](http://Stuller.com/TwoStoneBridal) for more options.

TWO-STONE RINGS

NEW



**122928** Round-Shape Two-Stone Ring Mounting,  $\frac{1}{3}$  ct center stones (4.4mm), 14kt white, 32, size 7, **\$505**

**122928** Matching Band, 14kt white, size 7, **\$335**



**122930** Round-Shape Two-Stone Semi-Mount Ring,  $\frac{1}{3}$  ct center stones (4.4mm), .07 CTW, 14kt white, 32, size 7, **\$875**. Mounting #122930.

**122930** Matching Diamond Band, .06 CTW, 14kt white, size 7, **\$785**. Mounting #122930.



**122929** Round-Shape Two-Stone Ring Mounting,  $\frac{1}{3}$  ct center stones (4.4mm), 14kt white, 32, size 7, **\$525**

**122929** Matching Band, 14kt white, size 7, **\$365**



BEST  
SELLER

**122931** Round-Shape Two-Stone Semi-Mount Ring,  $\frac{1}{3}$  ct center stones (4.4mm), .07 CTW, 14kt white, 32, size 7, **\$1,145**. Mounting #122931.

**122931** Matching Diamond Band,  $\frac{1}{6}$  CTW, 14kt white, size 7, **\$969**. Mounting #122931.

NEW

TWO-STONE RINGS



**652211** Round-Shape Two-Stone Semi-Mount Ring, ½ ct center stones (5.2mm), ⅓ CTW, 14kt white, 109, size 7, **\$1,495**

**652211** Diamond Matching Band, ⅓ CTW, 14kt white, 109, size 7, **\$659**



BEST  
SELLER

**652208** Round-Shape Two-Stone Semi-Mount Ring, ½ ct center stones (5.2mm), ⅓ CTW, 14kt white, 109, size 7, **\$1,415**

**652208** Diamond Matching Band, ⅓ CTW, 14kt white, 109, size 7, **\$769**



**122927** Round-Shape Two-Stone Semi-Mount Ring, ⅓ ct center stones (4.4mm), ⅓ CTW, 14kt white, 32, size 7, **\$1,379**. Mounting #122927.

**122927** Matching Diamond Band, ⅓ CTW, 14kt white, 109, size 7, **\$999**. Mounting #122927.



**652209** Round-Shape Two-Stone Semi-Mount Ring, ½ ct center stones (5.2mm), ⅓ CTW, 14kt white, 109, size 7, **\$1,809**

**652209** Diamond Matching Band, ⅓ CTW, 14kt white, 109, size 7, **\$515**

TWO-STONE RINGS

NEW



3C BEST SELLER

**122933** Round-Shape Two-Stone Semi-Mount Ring, ½ ct center stones (5.2mm), ⅓ CTW, 14kt white, 32, size 7, **\$1,079**. Mounting #122933.



**122936** Matching Diamond Band, ⅓ CTW, 14kt white, 32, size 7, **\$965**. Mounting #122936.



3C

**122935** Round-Shape Two-Stone Solitaire Mounting, ½ ct center stones (5.2mm), 14kt white, size 7, **\$545**



**51621** Matching Band, 14kt white, size 7, **\$349**



3C

**122934** Round-Shape Two-Stone Semi-Mount Ring, ½ ct center stones (5.2mm), ⅓ CTW, 14kt white, 32, size 7, **\$5,475**. Mounting #122934.



**122937** Matching Diamond Band, ¼ CTW, 14kt white, 32, size 7, **\$949**. Mounting #122937.

One Stone for a Soulmate,  
One For Their a Love

The beautiful meaning of two-stone bridal rings — soulmate and true love — appeals to couples for engagements, anniversaries, and elegant right-hand rings.

Flexible 3C styles offer a world of customization options.



# Essential Engagement Rings and Bands

---

Or should we say must-haves? This section includes more than classics and bestsellers. We've added newly updated classics and new on-trend designs styled to speak to today's couples.



A. **122219** Round-Shape Semi-Mount Engagement, 1½ ct center (7.4mm), ⅜ CTW, 14kt white, 32, size 7, **\$1,745**. Mounting #122219. | B. **122220** Matching Diamond Band, ⅓ CTW, 14kt white, 32, size 7, **\$749**. Mounting #122220. | C. **IR** Comfort-Fit Band, 2mm, 14kt rose, size 7, **\$369**

Center diamond sold separately unless otherwise noted.

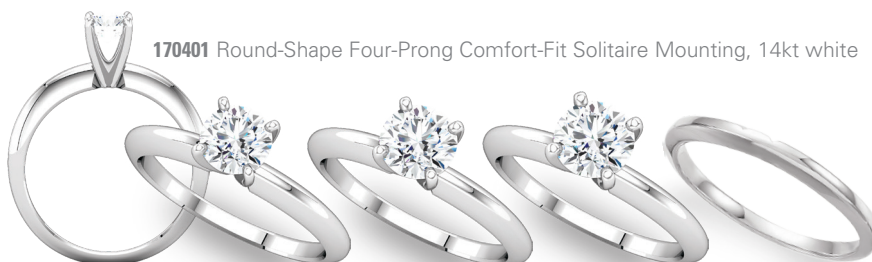


D. **122060** Cushion-Shape Semi-Mount Engagement, 1¼ ct center (7x7mm), ⅛ CTW, 14kt rose, 32, size 7, **\$975**. Mounting #122060. | E. **122108** Diamond Eternity Band, 1½ CTW, 14kt white, 32, size 7, **\$4,259**. Mounting #122108. | F. **IR** Comfort-Fit Band, 6mm, 14kt yellow, size 11, **\$1,075** | G. **140309L** Round-Shape Six-Prong Light Solitaire Mounting, 1 ct center (6.5mm), 14kt white, size 6, **\$295**

Center diamond sold separately unless otherwise noted.

**BEST  
SELLER****ESSENTIAL FOUR-PRONG SOLITAIRES****140401L** Round-Shape Four-Prong Light Solitaire Mounting, 14kt rose

CTW	½	¾	1	<b>10241</b> Matching Band, 14kt rose, size 6, <b>\$245</b>
mm	5.2	5.8	6.5	
14kt	<b>\$255</b>	<b>\$275</b>	<b>\$275</b>	

**170401** Round-Shape Four-Prong Comfort-Fit Solitaire Mounting, 14kt white

CTW	½	¾	1	<b>5765</b> Matching Band, 14kt white, size 6, <b>\$339</b>
mm	5.2	5.8	6.5	
14kt	<b>\$395</b>	<b>\$415</b>	<b>\$419</b>	

**150401** Round-Shape Four-Prong Solitaire Mounting, 14kt yellow/white

CTW	½	¾	1	1½
mm	5.2	5.8	6.5	7.4
14kt	<b>\$305</b>	<b>\$325</b>	<b>\$329</b>	<b>\$345</b>



## ESSENTIAL SIX-PRONG SOLITAIRES

**BEST  
SELLER**



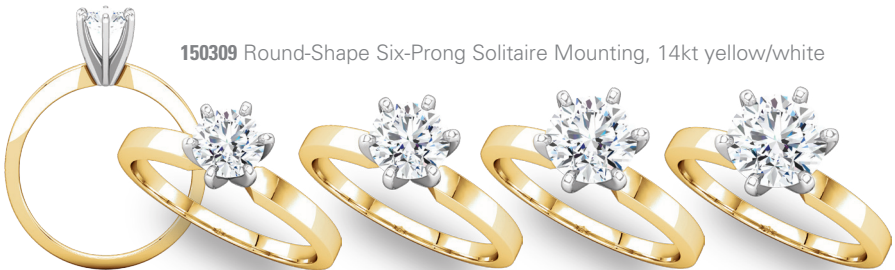
**140309L** Round-Shape Six-Prong Light Solitaire Mounting, 14kt rose

CTW	½	¾	1	<b>10241</b> Matching Band, 14kt rose, size 6, <b>\$245</b>
mm	5.2	5.8	6.5	
14kt	<b>\$259</b>	<b>\$275</b>	<b>\$285</b>	



**170309** Round-Shape Six-Prong Comfort-Fit Solitaire Mounting, 14kt white

CTW	½	¾	1	<b>5790</b> Matching Band, 14kt white, size 6, <b>\$299</b>
mm	5.2	5.8	6.5	
14kt	<b>\$399</b>	<b>\$415</b>	<b>\$425</b>	



**150309** Round-Shape Six-Prong Solitaire Mounting, 14kt yellow/white

CTW	½	¾	1	1½
mm	5.2	5.8	6.5	7.0
14kt	<b>\$335</b>	<b>\$355</b>	<b>\$359</b>	<b>\$375</b>



**BEST SELLER**

**69803** Cushion-Shape Semi-Mount Engagement, 1¼ ct center (6x6mm), ½ CTW, 14kt white, 109, size 6, **\$1,949.**



**69803** Matching Band, 14kt white, size 6, **\$1,079**



**3C**

**122870** Cushion-Shape Semi-Mount Engagement, 2 ct center (7x7mm), ½ CTW, 14kt rose, 32, size 7, **\$1,705.** Mounting #122870.



**122871** Diamond Anniversary Band, ¼ CTW, 14kt rose, 32, size 7, **\$1,069.** Mounting #122871.



**3C**

**122800** Cushion-Shape Semi-Mount Engagement, 1¼ ct center (6x6mm), ¾ CTW, 14kt white, 35, size 7, **\$3,249.** Mounting #122800.



**122801** Diamond Anniversary Band, ¾ CTW, 14kt white, 35, size 7, **\$3,035.** Mounting #122801.



**3C**

**BEST SELLER**

**121981** Cushion-Shape Semi-Mount Engagement, 1¼ ct center (6x6mm), ⅓ CTW, 14kt white, 32, size 7, **\$909.** Mounting #121981.



**51247** Matching Band, 14kt white, size 7, **\$395**



CUSHION

ESSENTIAL ENGAGEMENT RINGS



NEW

**122732** Cushion-Shape Semi-Mount Engagement, 1¼ ct center (6x6mm), ⅓ CTW, 14kt white, 21, 32, size 7, **\$1,489**.  
Mounting #122732.



**122145** Diamond Anniversary Band, ¼ CTW, 14kt white, 32, size 7, **\$1,039**.  
Mounting #122145.



NEW

**122767** Cushion-Shape Semi-Mount Engagement, 1¼ ct center (6x6mm), ⅓ CTW, 14kt white, 21, 32, size 7, **\$855**.  
Mounting #122767.



**122767** Matching Diamond Band, ⅓ CTW, 14kt white, 32, size 7, **\$975**.  
Mounting #122767.



3C

**122797** Cushion-Shape Semi-Mount Engagement, 1¼ ct center (6x6mm), .04 CTW, 14kt rose, 32, size 7, **\$759**.  
Mounting #122797.



**51561** Matching Band, 14kt rose, size 7, **\$475**



3C

**122793** Cushion-Shape Semi-Mount Engagement, 1¼ ct center (6x6mm), ⅓ CTW, 14kt white, 32, size 7, **\$1,839**.  
Mounting #122793.



**122794** Diamond Anniversary Band, ⅓ CTW, 14kt white, 32, size 7, **\$875**.  
Mounting #122794.

ESSENTIAL ENGAGEMENT RINGS

ROUND 



NEW

**652114** Round-Shape Semi-Mount Engagement, 1 ct center (6.5mm),  $\frac{3}{8}$  CTW, 14kt white, 109, size 7, **\$1,745**

**652114** Matching Diamond Band,  $\frac{1}{8}$  CTW, 14kt white, 32, size 7, **\$625**



3C BEST SELLER

**122665** Round-Shape Semi-Mount Engagement, 1 ct center (6.5mm), .08 CTW, 14kt white, 32, size 7, **\$999**. Mounting #122665.



**122717** Matching Diamond Band, .08 CTW, 14kt white, 32, size 7, **\$749**



NEW

**122771** Round-Shape Semi-Mount Engagement, 1 ct center (6.5mm),  $\frac{1}{3}$  CTW, 14kt white, 32, size 7, **\$1,339**. Mounting #122771.



**122835** Diamond Anniversary Band,  $\frac{3}{8}$  CTW, 14kt white, 32, size 7, **\$1,289**. Mounting #122835.



3C BEST SELLER

**122060** Round-Shape Semi-Mount Engagement, 1 ct center (6.5mm),  $\frac{1}{10}$  CTW, 14kt yellow, 32, size 7, **\$915**. Mounting #122060.



**51254** Matching Band, 14kt yellow, size 7, **\$415**



ROUND

ESSENTIAL ENGAGEMENT RINGS



**3C** BEST SELLER

**122804** Round-Shape Semi-Mount Engagement, 1 ct center (6.5mm),  $\frac{3}{4}$  CTW, 14kt rose, 32, size 7, **\$2,605**. Mounting #122804.



**122805** Diamond Anniversary Band,  $\frac{1}{2}$  CTW, 14kt rose, 32, size 7, **\$1,625**. Mounting #122805.



**NEW**

**122678** Round-Shape Semi-Mount Engagement, 1 ct center (6.5mm),  $\frac{1}{2}$  CTW, 14kt white, 32, size 7, **\$1,959**. Mounting #122678.



**122905** Diamond Anniversary Band, .08 CTW, 14kt white, 32, size 7, **\$805**. Mounting #122905.



**NEW**

**122704** Round-Shape Semi-Mount Engagement, 1 ct center (6.5mm),  $\frac{1}{2}$  CTW, 14kt white, 32, size 7, **\$1,745**. Mounting #122704.

**122704** Matching Diamond Band,  $\frac{1}{8}$  CTW, 14kt white, 32, size 7, **\$945**. Mounting #122704.



**3C**

**122795** Round-Shape Semi-Mount Engagement,  $\frac{3}{4}$  ct center (5.8mm),  $\frac{1}{2}$  CTW, 14kt yellow, 32, size 7, **\$1,575**. Mounting #122795.



**122796** Diamond Anniversary Band,  $\frac{1}{2}$  CTW, 14kt yellow, 32, size 7, **\$1,445**. Mounting #122796.

ESSENTIAL ENGAGEMENT RINGS

OVAL 



**3C** **BEST SELLER**

**122011** Oval-Shape Six-Prong Solitaire Mounting, 1 ct center (7x5mm), 14kt yellow, size 7, **\$615**



**51238** Matching Band, 14kt yellow, size 7, **\$699**



**3C** **BEST SELLER**

**122669** Oval-Shape Semi-Mount Engagement, 1 ct center (7x5mm), 1/2 CTW, 14kt white, 32, size 7, **\$1,215**. Mounting #122669.



**122721** Matching Diamond Band, 1/2 CTW, 14kt white, 32, size 7, **\$885**. Mounting #122721.



**3C**

**122913** Oval-Shape Semi-Mount Engagement, 1 ct center (7x5mm), 1/2 CTW, 14kt white, 32, size 7, **\$1,479**. Mounting #122913.



**122914** Diamond Anniversary Band, 1/4 CTW, 14kt white, 32, size 7, **\$1,205**. Mounting #122914.



**3C** **NEW**

**122790** Oval-Shape Semi-Mount Engagement, 1 ct center (7x5mm), 1/2 CTW, 14kt rose, 32, size 7, **\$1,015**. Mounting #122790.



**122814** Diamond Anniversary Band, 1/4 CTW, 14kt rose, 32, size 7, **\$1,015**. Mounting #122814.





3C

**122836** Emerald-Shape Semi-Mount Engagement, 1 ct center (7x5mm), 1/2 CTW, 14kt white, 32, size 7, **\$1,285**.  
Mounting #122836.



**122837** Diamond Anniversary Band, 1/2 CTW, 14kt white, 32, size 7, **\$849**.  
Mounting #122837.



3C

BEST  
SELLER

**122000** Emerald-Shape Semi-Mount Engagement, 1 ct center (7x5mm), 1/2 CTW, 14kt yellow, 32, size 7, **\$2,389**.  
Mounting #122000.



**122154** Matching Diamond Band, 1/2 CTW, 14kt yellow, 32, size 7, **\$1,009**.  
Mounting #122154.



3C

**122827** Emerald-Shape Semi-Mount Engagement, 1 ct center (7x5mm), 1/2 CTW, 14kt white, 32, size 7, **\$2,105**.  
Mounting #122827.



**122828** Matching Diamond Band, 1/2 CTW, 14kt white, 32, size 7, **\$1,455**.  
Mounting #122828.



3C

NEW

**122888** Emerald-Shape Semi-Mount Engagement, 1 ct center (7x5mm), 3/8 CTW, 14kt white, 32, size 7, **\$1,829**.  
Mounting #122888.



**122890** Diamond Anniversary Band, 1/2 CTW, 14kt white, 32, size 7, **\$1,075**.  
Mounting #122890.

**3C** ESSENTIAL LADIES' BANDS

**122878** Channel-Set Anniversary Band



**Round**



mm	CTW	14kt Complete	14kt Mounting
1.5	¼	<b>\$1,395</b>	<b>\$509</b>
1.7	⅓	<b>\$1,445</b>	<b>\$529</b>
2	½	<b>\$1,619</b>	<b>\$559</b>



**Asscher**



mm	CTW	14kt Complete	14kt Mounting
2	¾	<b>\$3,589</b>	<b>\$549</b>
2.6	1½	<b>\$5,179</b>	<b>\$719</b>



**Square**



mm	CTW	14kt Complete	14kt Mounting
1.7	½	<b>\$2,179</b>	<b>\$529</b>
2	⅝	<b>\$2,665</b>	<b>\$549</b>

*Available stone shapes*



**122108** Channel-Set Eternity Band



**BEST SELLER**



**Round**



mm	CTW	14kt Complete	14kt Mounting
1.5	⅝	<b>\$1,915</b>	<b>\$395</b>
1.7	¾	<b>\$2,155</b>	<b>\$435</b>
2	⅞	<b>\$2,529</b>	<b>\$559</b>



**Asscher**



mm	CTW	14kt Complete	14kt Mounting
2	1¾	<b>\$7,565</b>	<b>\$699</b>
2.6	3⅝	<b>\$11,339</b>	<b>\$825</b>



**Square**



mm	CTW	14kt Complete	14kt Mounting
1.5	1¼	<b>\$3,775</b>	<b>\$499</b>
2	1½	<b>\$2,069</b>	<b>\$655</b>

*Available stone shapes*







122877 Prong-Set Anniversary Band



122107 Prong-Set Eternity Band



BEST SELLER



Round



Round



mm	CTW	14kt Complete	14kt Mounting
1.5	¼	<b>\$1,079</b>	<b>\$325</b>
1.7	⅓	<b>\$1,139</b>	<b>\$315</b>
2	⅜	<b>\$1,295</b>	<b>\$335</b>

mm	CTW	14kt Complete	14kt Mounting
1.5	½	<b>\$1,815</b>	<b>\$275</b>
1.7	⅝	<b>\$2,025</b>	<b>\$295</b>
2	⅞	<b>\$2,245</b>	<b>\$285</b>



Asscher



Asscher



mm	CTW	14kt Complete	14kt Mounting
2	¾	<b>\$2,969</b>	<b>\$345</b>
2.6	1⅙	<b>\$4,719</b>	<b>\$429</b>

mm	CTW	14kt Complete	14kt Mounting
2	1½	<b>\$5,709</b>	<b>\$295</b>
2.6	2⅓	<b>\$9,355</b>	<b>\$405</b>



Square



Square



mm	CTW	14kt Complete	14kt Mounting
1.5	½	<b>\$1,405</b>	<b>\$325</b>
2	¾	<b>\$2,159</b>	<b>\$395</b>

mm	CTW	14kt Complete	14kt Mounting
1.5	1⅓	<b>\$2,569</b>	<b>\$315</b>
2	1⅙	<b>\$4,139</b>	<b>\$389</b>

Available stone shapes



Available stone shapes



# Essential Bands

---

What's the skinny on classic bands? Our new 1mm and 1.5mm skinny classics are a hot trend, selling at a crazy pace. They go solo or stacked to beautiful effect. Our best-selling 3mm to 6mm bands look gorgeous as is or customized with special finishes and engraving.



A. **IR** Comfort-Fit Band, 6mm, 14kt white, size 10, **\$1,045** | B. **HR** Half-Round Band, 3mm, 14kt rose, size 7, **\$309** | C. **MG** Milgrain Band, 5mm, 14kt white, size 10, **\$609** | D. **F** Flat Band, 1.5mm, 14kt yellow, size 6, **\$189**

**HR** Half-Round Band



1mm, 14kt white,  
size 7, **\$145**



1.5mm, 14kt yellow,  
size 7, **\$155**



2mm, 14kt white,  
size 7, **\$219**

**F** Flat Band



1mm, 14kt white,  
size 7, **\$145**



1.5mm, 14kt yellow,  
size 7, **\$205**



2mm, 14kt white,  
size 7, **\$229**

**IR** Comfort-Fit Band



1mm, 14kt white,  
size 7, **\$219**



1.5mm, 14kt yellow,  
size 7, **\$265**



2mm, 14kt rose,  
size 7, **\$369**

CLASSIC BANDS



**HR** Half-Round Band (Available in 1-12mm widths.)



4mm, 14kt rose,  
size 7, **\$459**; size 11, **\$525**



5mm, 14kt yellow,  
size 7, **\$525**; size 11, **\$609**



6mm, 14kt white,  
size 7, **\$615**; size 11, **\$685**

---

**HRE** Half-Round Edge Band (Available in 2-8mm widths.)



4mm, 14kt white,  
size 7, **\$405**; size 11, **\$489**



5mm, 14kt white,  
size 7, **\$545**; size 11, **\$629**



6mm, 14kt yellow,  
size 7, **\$675**; size 11, **\$779**

---



**HRL** Half-Round Light Band (Available in 2-10mm widths.)



4mm, 14kt yellow,  
size 7, **\$339**; size 11, **\$395**  
Shown with Glass Blast finish.



5mm, 14kt white,  
size 7, **\$399**; size 11, **\$475**  
Shown with Ice finish.



6mm, 14kt yellow,  
size 7, **\$479**; size 11, **\$565**  
Shown with Bead Blast finish.

---

**F Flat Band** (Available in 1-12mm widths.)



3mm, 14kt white,  
size 7, **\$325**; size 11, **\$375**



4mm, 14kt white,  
size 7, **\$415**; size 11, **\$479**



6mm, 14kt yellow,  
size 7, **\$599**; size 11, **\$69**

**FIR Flat Comfort-Fit Band** (Available in 1.5-12mm widths.)



3mm, 14kt white,  
size 7, **\$459**; size 11, **\$529**



4mm, 14kt white,  
size 7, **\$585**; size 11, **\$645**



6mm, 14kt white,  
size 7, **\$865**; size 11, **\$989**

**FE Flat-Edge Band** (Available in 2.5-12mm widths.)



3mm, 14kt yellow,  
size 7, **\$299**; size 11, **\$345**



4mm, 14kt white,  
size 7, **\$385**; size 11, **\$439**



6mm, 14kt white,  
size 7, **\$555**; size 11, **\$645**

# Platinum

---

Millennials have embraced platinum for its elegance and natural white beauty. Pure and strong, platinum says “forever” with caché. This collection features bestsellers, new engagement styles and an exciting band selection that includes classic and fancy bands for her and for him.



- A. **122099** Asscher-Shape 4-Prong Solitaire Mounting,  $\frac{3}{4}$  ct center (5x5mm), platinum, size 7, **\$1,395** | B. **51223** Matching Diamond Band,  $\frac{1}{8}$  CTW, platinum, 32, size 7, **\$1,729**  
C. **MG** Milgrain Band, 4mm, platinum, size 11, **\$1,255** | D. **122686** Round-Shape Semi-Mount Engagement, 1 ct center (6.5mm), .08 CTW, platinum, 32, size 7, **\$2,379**. Mounting #122686  
E. **122834** Matching Diamond Band, .08 CTW, platinum, 32, size 7, **\$1,479**. Mounting #122834

Center diamond sold separately unless otherwise noted.



PLATINUM INFINITY ENGAGEMENT RINGS



3C

**122802** Oval-Shape Semi-Mount Engagement, 1½ ct center (8x6mm), ¼ CTW, platinum, 32, size 7, **\$2,659**.  
Mounting #122802.



**122803** Diamond Eternity Band, ½ CTW, platinum, 32, size 7, **\$3,505**.  
Mounting #122803.



3C NEW

**122892\*** Round-Shape Semi-Mount Engagement, 1 ct center (6.5mm), ⅓ CTW, platinum, 32, size 7, **\$3,565**.  
Mounting #122892.



**122893\*** Matching Diamond Band, ⅓ CTW, platinum, 32, size 7, **\$1,455**.  
Mounting #122893.  
*\*featured on cover*



3C

**122686** Round-Shape Semi-Mount Engagement, 1 ct center (6.5mm), .08 CTW, platinum, 32, size 7, **\$2,379**.  
Mounting #122686.



**122834** Matching Diamond Band, .08 CTW, platinum, 32, size 7, **\$1,479**.  
Mounting #122834.



3C BEST SELLER

**122705** Emerald-Shape Four-Prong Solitaire Mounting, 1 ct center (7x5mm), platinum, size 7, **\$1,369**



**51544** Matching Band, platinum, size 7, **\$885**

**BEST  
SELLER**

## PLATINUM CLASSIC ENGAGEMENT RINGS



**140401H** Round-Shape Four-Prong Heavy Solitaire Mounting, 1 ct center (6.5mm), platinum, size 6, **\$1,189**

**10241** Matching Band, platinum, size 6, **\$809**



**140309H** Round-Shape Six-Prong Heavy Solitaire Mounting, 1 ct center (6.5mm), platinum, size 6, **\$1,205**

**10241** Matching Band, platinum, size 6, **\$909**



**3C**

**121987** Cushion-Shape Semi-Mount Engagement, 1 1/4 ct center (6x6mm), 1/3 CTW, platinum, 32, size 7, **\$2,045**. Mounting #121987.



**122145** Diamond Anniversary Band, 1/4 CTW, platinum, 32, size 7, **\$1,455**. Mounting #122145.



**3C**

**69706** Round-Shape Semi-Mount Engagement, 1 ct center (6.5mm), 1/3 CTW, platinum, VS, GH1, 22, size 7, **\$3,909**. Mounting #69706.



**51230** Matching Band, platinum, size 7, **\$1,249**



PLATINUM CLASSIC BANDS

BEST  
SELLER

Diamond Eternity Band, platinum, 32, size 7



**121939** ¼ CTW, **\$2,499.**  
Mounting #121939.



**121935** ⅞ CTW, **\$2,735.**  
Mounting #121935.



**121938** 1¼ CTW, **\$3,889.**  
Mounting #121938.

Diamond Anniversary Band, platinum, 32, size 7



**62857** ½ CTW, **\$2,975.**  
Mounting #120766.



**62858** ¾ CTW, **\$3,789.**  
Mounting #120767.



**62859** 1⅛ CTW, **\$5,679.**  
Mounting #120768.

Diamond Anniversary Band, platinum, 35, size 7



**62177** ¼ CTW, **\$1,735.**  
Mounting #SH257.



**62178** ⅓ CTW, **\$2,085.**  
Mounting #SH258.



**62179** ½ CTW, **\$2,525.**  
Mounting #SH256.



## PLATINUM BANDS

### HRL Half-Round Light Band



2mm, platinum,  
size 7, **\$495**; size 11, **\$555**



4mm, platinum,  
size 7, **\$915**; size 11, **\$1,065**



6mm, platinum,  
size 7, **\$1,315**; size 11, **\$1,539**

---

### IR Comfort-Fit Band



2mm, platinum,  
size 7, **\$789**; size 11, **\$895**



4mm, platinum,  
size 7, **\$1,745**; size 11, **\$2,035**



6mm, platinum,  
size 7, **\$2,525**; size 11, **\$2,955**

---

### F Flat Band



2mm, platinum,  
size 7, **\$625**; size 11, **\$715**



4mm, platinum,  
size 7, **\$1,149**; size 11, **\$1,339**



6mm, platinum,  
size 7, **\$1,689**; size 11, **\$1,995**

---

## PLATINUM BANDS



**BEST  
SELLER**

**255 Twisted Rope Band,**  
2mm, platinum, size 7, **\$365**



**BEST  
SELLER**

**254 Twisted Rope Band,**  
3mm, platinum, size 7, **\$899**



**BEST  
SELLER**

**50072 Hand-Engraved  
Band,** 3mm, platinum,  
size 7, **\$1,335**



**HRE Half-Round Edge  
Band,** 4mm, platinum,  
size 7, **\$1,105**



**BEST  
SELLER**

**FE Flat-Edge Band,**  
4mm, platinum,  
size 7, **\$1,005**; size 11, **\$1,125**



**51324 Hand-Engraved  
Band,** 6mm, platinum,  
size 7, **\$3,915**; size 11, **\$4,545**



**50102 Grooved Fancy  
Band,** 6mm, platinum,  
size 7, **\$3,259**; size 11, **\$3,879**



**NEW**

**51541 Flat-Edge Comfort-Fit  
Milgrain Band with Hammer  
Finish,** 5mm, platinum, size  
7, **\$2,755**; size 11, **\$3,189**



**50583 Grooved Flat-Edge  
Comfort-Fit Band,** 7.5mm,  
platinum, size 7, **\$2,769**; size  
11, **\$3,565**

# Intricate Touches

---

Love is in the details. The two-tone engagement rings have intricately embellished galleries, some with peek-a-boo diamonds. Match her two-tone ring with a sophisticated two-tone band or choose a discreet pattern wedding band that reveals a unique, subtle secret.



A. **652111** Round-Shape Semi-Mount Engagement, 1 ct center (6.5mm),  $\frac{1}{3}$  CTW, 14kt white/yellow, 544, size 7, **\$1,305** | B. **50075** Comfort-Fit Fancy Band, 7mm, 14kt white/yellow/white, size 7, **\$1,115**; size 11, **\$1,365** | C. **652110** Round-Shape Semi-Mount Engagement, 1 ct center (6.5mm),  $\frac{1}{2}$  CTW, 14kt white/rose, 544, size 7, **\$2,039**

Center diamond sold separately unless otherwise noted.

TWO-TONE ENGAGEMENT RINGS

NEW



**122910** Round-Shape Semi-Mount Engagement, 1 ct center (6.5mm),  $\frac{1}{3}$  CTW, 14kt white/rose, 32, size 7, **\$2,199**. Mounting #122910. Matching Band #122944.



**122912** Round-Shape Semi-Mount Engagement, 1 ct center (6.5mm), .02 CTW, 14kt white/rose, 32, size 7, **\$619**. Mounting #122912. Matching band #122944.



**122911** Round-Shape Semi-Mount Engagement, 1 ct center (6.5mm),  $\frac{3}{8}$  CTW, 14kt white/rose, 32, size 7, **\$1,365**. Mounting #122911. Matching Band #122944.



**122909** Cushion-Shape Semi-Mount Engagement,  $1\frac{1}{4}$  ct center (6x6mm),  $\frac{3}{8}$  CTW, 14kt white/yellow, 32, size 7, **\$2,115**. Mounting #122909. Matching Band #122944.

NEW

GALLERY ENGAGEMENT RINGS



**652111** Round-Shape Semi-Mount Engagement,  $\frac{3}{4}$  ct center (5.8mm),  $\frac{1}{3}$  CTW, 14kt white/rose, 544, size 7, **\$1,329**

**652111** Matching Diamond Band,  $\frac{1}{4}$  CTW, 14kt white, 544, size 7, **\$1,035**

*Also available in 14kt white/yellow.*



**652112** Round-Shape Semi-Mount Engagement, 1 ct center (6.5mm),  $\frac{1}{2}$  CTW, 14kt white/rose, 544, size 7, **\$1,889**

**652112** Matching Diamond Band,  $\frac{1}{4}$  CTW, 14kt white, 544, size 7, **\$1,015**

*Also available in 14kt white/yellow.*



**652141** Round-Shape Semi-Mount Engagement,  $\frac{3}{4}$  ct center (5.8mm),  $\frac{3}{8}$  CTW, 14kt white/rose, 544, size 7, **\$1,775**

**652141** Matching Diamond Band,  $\frac{1}{5}$  CTW, 14kt white, 544, size 7, **\$895**

*Also available in 14kt white/yellow.*



**652113** Round-Shape Semi-Mount Engagement,  $\frac{1}{2}$  ct center (5.2mm),  $\frac{1}{2}$  CTW, 14kt white/rose, 544, size 7, **\$2,109**

**652113** Matching Diamond Band,  $\frac{1}{6}$  CTW, 14kt white, 544, size 7, **\$715**

*Also available in 14kt white/yellow.*





**122780** Square-Shape Semi-Mount Engagement,  $\frac{3}{4}$  ct center (5x5mm),  $\frac{3}{8}$  CTW, 14kt white, 32, size 7, **\$1,539**.  
Mounting #122780.



**122850** Diamond Anniversary Band,  $\frac{1}{2}$  CTW, 14kt white, 32, size 7, **\$1,309**.  
Mounting #122850.



**122781** Round-Shape Semi-Mount Engagement, 1 ct center (6.5mm),  $\frac{1}{4}$  CTW, 14kt white, 32, size 7, **\$1,405**.  
Mounting #122781.



**51593** Matching Band, 14kt white, size 7, **\$395**



**122778** Cushion-Shape Semi-Mount Engagement,  $1\frac{1}{4}$  ct center (6x6mm),  $\frac{1}{2}$  CTW, 14kt white, 32, size 7, **\$1,435**.  
Mounting #122778.



**122850** Diamond Anniversary Band,  $\frac{1}{2}$  CTW, 14kt white, 32, size 7, **\$1,309**.  
Mounting #122850.



**122779** Round-Shape Semi-Mount Engagement,  $\frac{3}{4}$  ct center (5.8mm),  $\frac{1}{2}$  CTW, 14kt white, 32, size 7, **\$1,985**.  
Mounting #122779.



**122850** Diamond Anniversary Band,  $\frac{1}{2}$  CTW, 14kt white, 32, size 7, **\$1,309**.  
Mounting #122850.

NEW

GALLERY ENGAGEMENT RINGS



3C

**122868** Emerald-Shape Semi-Mount Engagement, 1/2 ct center (6x4mm), 1/5 CTW, 14kt white, 32, size 7, **\$1,115**.  
Mounting #122868.



**122869** Matching Diamond Band, 1/4 CTW, 14kt white, 32, size 7, **\$1,189**.  
Mounting #122869.



3C

**122838** Round-Shape Semi-Mount Engagement, 3/4 ct center (5.8mm), 1/5 CTW, 14kt yellow, 32, size 7, **\$1,015**.  
Mounting #122838.



**122839** Diamond Anniversary Band, 1/5 CTW, 14kt yellow, 32, size 7, **\$879**.  
Mounting #122839.



3C

**122875** Round-Shape Semi-Mount Engagement, 1 ct center (6.5mm), 1/2 CTW, 14kt white, 32, size 7, **\$1,819**.  
Mounting #122875.



**122876** Diamond Anniversary Band, 1/5 CTW, 14kt white, 32, size 7, **\$1,059**.  
Mounting #122876.



3C

**122848** Square-Shape Semi-Mount Engagement, 1 ct center (5.5x5.5mm), 1/4 CTW, 14kt white, 32, size 7, **\$1,465**.  
Mounting #122848.



**122849** Diamond Anniversary Band, 1/4 CTW, 14kt white, 32, size 7, **\$1,205**.  
Mounting #122849.





3C

**122854** Cushion-Shape Semi-Mount Engagement, 1¼ ct center (6x6mm), ¼ CTW, 14kt white, 32, size 7, **\$1,185**.  
Mounting #122854.



**51594** Matching Band, 14kt white, size 7, **\$339**



3C

**122842** Round-Shape Semi-Mount Engagement, 1 ct center (6.5mm), ½ CTW, 14kt rose, 32, size 7, **\$1,515**.  
Mounting #122842.



**122843** Diamond Anniversary Band, ½ CTW, 14kt rose, 32, size 7, **\$905**.  
Mounting #122843.



3C

**122873** Round-Shape Semi-Mount Engagement, 1 ct center (6.5mm), ½ CTW, 14kt white, 32, size 7, **\$1,599**.  
Mounting #122873.



**122874** Diamond Anniversary Band, ½ CTW, 14kt white, 32, size 7, **\$999**.  
Mounting #122874.



3C

**122864** Cushion-Shape Semi-Mount Engagement, 1¼ ct center (6x6mm), ½ CTW, 14kt yellow, 32, size 7, **\$1,835**.  
Mounting #122864.



**122865** Diamond Anniversary Band, ½ CTW, 14kt yellow, 32, size 7, **\$1,065**.  
Mounting #122865.

NEW

TWO-TONE ENGAGEMENT RINGS



**652109** Round-Shape Semi-Mount Engagement, 1 ct center (6.5mm), ½ CTW, 14kt white/yellow, 544, size 7, **\$1,795**

**652109** Matching Diamond Band, ¼ CTW, 14kt white, 544, size 7, **\$1,035**

*Also available in 14kt white/rose.*



**652116** Round-Shape Semi-Mount Engagement, ½ ct center (5.2mm), ½ CTW, 14kt white/rose, 544, size 7, **\$2,139**

**652116** Matching Diamond Band, ¼ CTW, 14kt white, 544, size 7, **\$805**

*Also available in 14kt white/yellow.*



**652110** Round-Shape Semi-Mount Engagement, 1 ct center (6.5mm), ½ CTW, 14kt white/rose, 544, size 7, **\$2,039**

**652110** Matching Diamond Band, ¼ CTW, 14kt white, 544, size 7, **\$749**

*Also available in 14kt white/yellow.*



**652107** Round-Shape Semi-Mount Engagement, 1 ct center (6.5mm), ½ CTW, 14kt white/rose, 544, size 7, **\$1,759**

**652107** Matching Diamond Band, ¼ CTW, 14kt white, 544, size 7, **\$839**

*Also available in 14kt white/yellow.*



**652108** Round-Shape Semi-Mount Engagement, 1 ct center (6.5mm), ½ CTW, 14kt white/rose, 109, size 7, **\$2,395**

**652108** Diamond Anniversary Band, ¼ CTW, 14kt white, 109, size 7, **\$1,025**

*Also available in 14kt white/yellow.*



**652008** Round-Shape Semi-Mount Engagement, ¾ ct center (5.8mm), ½ CTW, 14kt white/yellow, 109, size 7, **\$1,275**



**652008** Matching Diamond Band, ½ CTW, 14kt white, 109, size 7, **\$705**



**652005** Round-Shape Semi-Mount Engagement, ¾ ct center (5.8mm), ½ CTW, 14kt white/yellow, 109, size 7, **\$1,245**



**652005** Matching Diamond Band, ½ CTW, 14kt white, 109, size 7, **\$755**



**652006** Round-Shape Semi-Mount Engagement, ¾ ct center (5.8mm), ¾ CTW, 14kt white/rose, 109, size 7, **\$1,815**



**652006** Matching Diamond Band, ½ CTW, 14kt white, 109, size 7, **\$865**

TWO-TONE ENGAGEMENT RINGS



3C

**122671** Round-Shape Semi-Mount Engagement, 1 ct center (6.5mm), 1/6 CTW, 14kt yellow/white, 32, size 7, **\$965**. Mounting #122671.



**51527** Matching Band, 14kt yellow, size 7, **\$359**



3C BEST SELLER

**122004** Round-Shape Six-Prong Solitaire Mounting, 1 ct center (6.5mm), 14kt yellow/white, size 7, **\$449**



**51236** Matching Band, size 7, **\$395**



NEW

**652053** Round-Shape Semi-Mount Engagement, 1 ct center (6.5mm), 1/2 CTW, 14kt yellow/white, 544, size 7, **\$3,555**

**652053** Matching Band, 14kt yellow, size 7, **\$905**

*Also available in 14kt rose/white.*



NEW

**652024** Round-Shape Semi-Mount Engagement, 1 ct center (6.5mm), .08 CTW, 14kt rose/white, 544, size 7, **\$1,605**

**652024** Matching Diamond Band, .07 CTW, 14kt white, 544, size 7, **\$1,089**

*Also available in 14ktyellow/white.*

## PATTERNED BANDS



NEW

**51565** Low Dome Band with Inside Paisley Design, 4mm, 14kt white, size 7, **\$565**; size 11, **\$639**

**51565** Low Dome Band with Inside Paisley Design, 6mm, 14kt yellow, size 7, **\$805**; size 11, **\$915**



NEW

**51564** Low Dome Band with Inside Lattice Design, 4mm, 14kt white, size 7, **\$559**; size 11, **\$655**

**51564** Low Dome Band with Inside Lattice Design, 6mm, 14kt yellow, size 7, **\$875**; size 11, **\$985**



**51578** Low-Dome Wheat Patterned Fancy Band, 3mm, 14kt white, size 7, **\$615**; size 11, **\$659**



NEW

**51578** Low-Dome Wheat Patterned Fancy Band, 5mm, 14kt yellow, size 7, **\$1,309**; size 11, **\$1,399**



**51577** Low Dome Sculptural Patterned Band, 4mm, 14kt rose, size 7, **\$729**; size 11, **\$955**



NEW

**51577** Low Dome Sculptural Patterned Band, 6mm, 14kt white, size 7, **\$1,135**; size 11, **\$1,439**

## TWO-TONE WEDDING BANDS



**50137** Comfort-Fit  
Beveled Edge Band, 4mm,  
14kt white/yellow/white,  
size 7, **\$555**; size 11, **\$645**



**5793** Comfort-Fit  
Beveled Edge Band, 6mm,  
14kt white/yellow/white,  
size 7, **\$1,035**; size 11, **\$1,239**



**50138** Flat-Edge  
Comfort-Fit Band, 7.5mm,  
14kt yellow/white/yellow,  
size 7, **\$955**; size 11, **\$1,105**



**50139** Comfort-Fit  
Fancy Band, 4mm,  
14kt white/yellow/white,  
size 7, **\$585**; size 11, **\$679**



**5641** Comfort-Fit  
Fluted Band, 6mm,  
14kt white/yellow/white,  
size 7, **\$879**; size 11, **\$1,009**



**50141** Comfort-Fit  
Fancy Milgrain Band, 6mm,  
14kt white/yellow/white,  
size 7, **\$799**; size 11, **\$929**



**5991** Comfort-Fit Rope  
Edge Band, 4mm,  
14kt yellow/white/yellow,  
size 7, **\$535**; size 11, **\$679**



**5634** Comfort-Fit  
Fancy Band, 6mm,  
14kt yellow/white/yellow,  
size 7, **\$975**; size 11, **\$1,105**



**5960** Comfort-Fit  
Double Milgrain Band, 6mm,  
14kt white/yellow/white,  
size 7, **\$655**; size 11, **\$1,055**



## TWO-TONE WEDDING BANDS



**5835** Comfort-Fit  
Fancy Band, 4mm,  
14kt white/yellow/white,  
size 7, **\$785**; size 11, **\$895**



**5848** Comfort-Fit  
Fancy Band, 5.5mm,  
14kt yellow/white/yellow,  
size 7, **\$909**; size 11, **\$1,045**



**50312** Comfort-Fit  
Fancy Band with  
Hammered Finish, 6mm,  
14kt white/yellow/white,  
size 7, **\$1,005**; size 11, **\$1,185**



**50247** Bonded Fancy  
Band, 4mm,  
14kt white/rose/white,  
size 7, **\$819**; size 11, **\$925**



**5988** Comfort-Fit  
Fancy Band, 6mm,  
14kt yellow/white/yellow,  
size 7, **\$1,115**; size 11, **\$1,305**



**5989** Comfort-Fit  
Fancy Band, 6mm,  
14kt white/yellow/white,  
size 7, **\$1,069**; size 11, **\$1,295**



**50075** Comfort-Fit  
Fancy Band, 7mm,  
14kt white/yellow/white,  
size 7, **\$1,115**; size 11, **\$1,365**



**50240** Comfort-Fit  
Fancy Band, 7mm,  
14kt white/yellow/white,  
size 7, **\$1,089**; size 11, **\$1,299**



**51343** Grooved Flat-Edge  
Band with Bead Blast and  
Polished Finish, 7mm,  
14kt yellow/white/yellow,  
size 7, **\$969**, size 11, **\$1,215**

# Bliss On A Budget

---

Find the beautiful rings they want at an amazing price.

Choose from this selection of semi-mounts with small centers under \$1,299. Quality doesn't mean a high price.



A. **651844** Round-Shape Semi-Mount Engagement,  $\frac{1}{2}$  ct center (5.2mm),  $\frac{1}{8}$  CTW, 14kt white, 109, size 7, **\$789** | B. **651769** Round-Shape Semi-Mount Engagement,  $\frac{1}{2}$  ct center (5.2mm), .05 CTW, 14kt white, 109, size 7, **\$465** | C. **651769** Matching Diamond Band, .07 CTW, 14kt white, 109, size 7, **\$385** | D. **652079** Round-Shape Semi-Mount Engagement,  $\frac{1}{4}$  ct center (4mm),  $\frac{1}{8}$  CTW, 14kt white, 109, size 7, **\$875** | E. **652079** Matching Diamond Band, .06 CTW, 14kt white, 109, size 7, **\$455**

Center diamond sold separately unless otherwise noted.

STYLES UNDER \$1,299



**652077** Round-Shape Semi-Mount Engagement, ½ ct center (5.2mm), ⅓ CTW, 14kt white, 109, size 7, **\$1,265**

**652077** Matching Diamond Band, ⅓ CTW, 14kt white, 109, size 7, **\$785**



**652089** Round-Shape Semi-Mount Engagement, ½ ct center (5.2mm), ⅓ CTW, 14kt white, 109, size 7, **\$959**

**652089** Matching Diamond Band, ⅓ CTW, 14kt white, 109, size 7, **\$665**



**652092** Round-Shape Semi-Mount Engagement, ½ ct center (5.2mm), ⅓ CTW, 14kt white, 109, size 7, **\$1,065**

**652092** Matching Diamond Band, ⅓ CTW, 14kt white, 109, size 7, **\$785**



**652094** Round-Shape Semi-Mount Engagement, ½ ct center (5.2mm), ⅓ CTW, 14kt white, 109, size 7, **\$835**

**652094** Matching Diamond Band, ⅓ CTW, 14kt white, 109, size 7, **\$749**

STYLES UNDER \$899



**652082** Round-Shape Semi-Mount Engagement, ¼ ct center (4mm), .07 CTW, 14kt white, 109, size 7, **\$615**

**652082** Matching Band, 14kt white, size 7, **\$285**



**652073** Round-Shape Semi-Mount Engagement, ¼ ct center (4mm), .06 CTW, 14kt white, 109, size 7, **\$565**

**652073** Matching Band, 14kt white, size 7, **\$235**



**652072** Round-Shape Semi-Mount Engagement, ¼ ct center (4mm), .08 CTW, 14kt white, 109, size 7, **\$705**

**652072** Matching Diamond Band, .07 CTW, 14kt white, 109, size 7, **\$465**



**652075** Round-Shape Semi-Mount Engagement, ¼ ct center (4mm), ⅓ CTW, 14kt white, 109, size 7, **\$755**

**652075** Matching Band, 14kt white, size 7, **\$325**



**652074** Round-Shape Semi-Mount Engagement, ¼ ct center (4mm), ⅓ CTW, 14kt white, 109, size 7, **\$759**

**652074** Matching Diamond Band, .07 CTW, 14kt white, 109, size 7, **\$499**



**652080** Round-Shape Semi-Mount Engagement, ¼ ct center (4mm), ⅓ CTW, 14kt white, 109, size 7, **\$655**

**652080** Matching Diamond Band, .07 CTW, 14kt white, 109, size 7, **\$465**



**652076** Round-Shape Semi-Mount Engagement, ¼ ct center (4mm), ⅓ CTW, 14kt white, 109, size 7, **\$765**

**652076** Matching Diamond Band, .06 CTW, 14kt white, 109, size 7, **\$479**



**652079** Round-Shape Semi-Mount Engagement, ¼ ct center (4mm), ⅓ CTW, 14kt white, 109, size 7, **\$875**

**652079** Matching Diamond Band, .06 CTW, 14kt white, 109, size 7, **\$455**



# Designs to Help Celebrate Their Love

---

Anniversaries, special occasions, a major achievement, and a loving surprise — we celebrate all these feelings and moments. Here's an outstanding selection of bands for her and for him. They can celebrate their love with many new and classic styles that include flexible 3C design available with different stone shapes and sizes.



A. **122737** Diamond Contour Band,  $\frac{1}{8}$  CTW, 14kt white, 32, size 7, **\$619**. Mounting #122737.

B. **51578** Wheat Patterned Fancy Band, 5mm, 14kt yellow, size 11, **\$1,399**

C. **69815** Diamond and Yellow Sapphire Eternity Band,  $\frac{1}{8}$  CTW, 32, 65, 14kt white, size 7, **\$1,905**





D. **121963** Diamond Eternity Band,  $\frac{5}{8}$  CTW, 14kt white, 32, size 7, **\$2,405**. Mounting #121963.

E. **651707** Diamond Eternity Band,  $\frac{1}{4}$  CTW, 14kt yellow, 32, size 7, **\$1,175** | F. **122719**

Comfort-Fit Double Milgrain Diamond Band, 6mm,  $\frac{1}{4}$  CTW, 14kt white, size 11, **\$1,799**.

Mounting #122719. | G. **63008** Diamond Anniversary Band,  $\frac{1}{6}$  CTW, 14kt white, 32, size 7, **\$865**

H. **122108** Diamond Eternity Band,  $\frac{3}{4}$  CTW, 14kt yellow, 32, size 7, **\$2,165**. Mounting #122108.



## DIAMOND BANDS

**122330** Round-Shape Diamond Eternity Band, 14kt white, 32, size 7. Mounting #122330.



mm	1.3	1.5	2
CTW	$\frac{1}{6}$	$\frac{1}{6}$	$\frac{1}{3}$
Complete	<b>\$789</b>	<b>\$909</b>	<b>\$1,335</b>
Mounting	<b>\$439</b>	<b>\$439</b>	<b>\$555</b>

**122626** Round-Shape Diamond Eternity Band, 14kt white, 32, size 7. Mounting #122626.



mm	1.3	1.5	2
CTW	$\frac{1}{3}$	$\frac{1}{2}$	$\frac{5}{8}$
Complete	<b>\$1,559</b>	<b>\$1,785</b>	<b>\$2,159</b>
Mounting	<b>\$539</b>	<b>\$565</b>	<b>\$615</b>

**122607** Round-Shape Diamond Eternity Band, 14kt white, 32, size 7. Mounting #122607.



mm	1.7	2	2.5
CTW	$\frac{1}{2}$	$\frac{5}{8}$	$\frac{3}{4}$
Complete	<b>\$3,335</b>	<b>\$3,495</b>	<b>\$3,835</b>
Mounting	<b>\$650</b>	<b>\$685</b>	<b>\$725</b>



**122844** Round-Shape Diamond Anniversary Band, 14kt white, 108, size 7. Mounting #122844.

NEW



mm	1.7	2	2.5
CTW	1/6	1/6	3/8
Complete	<b>\$739</b>	<b>\$875</b>	<b>\$1,359</b>
Mounting	<b>\$369</b>	<b>\$389</b>	<b>\$409</b>

**122647** Round-Shape Diamond Eternity Band, 14kt white, 32, size 7. Mounting #122647.

NEW



mm	1.7	2	2.5
CTW	3/8	1/2	5/8
Complete	<b>\$1,525</b>	<b>\$1,605</b>	<b>\$2,305</b>
Mounting	<b>\$569</b>	<b>\$629</b>	<b>\$699</b>

**122006** Round-Shape Diamond Eternity Band, 14kt white, 32, size 7. Mounting #122006.

BEST SELLER



mm	1.7	2	2.25
CTW	1/2	1/2	3/8
Complete	<b>\$1,615</b>	<b>\$2,165</b>	<b>\$1,685</b>
Mounting	<b>\$489</b>	<b>\$519</b>	<b>\$555</b>



## LADIES' BANDS

122641 Bar-Set Anniversary Band

NEW



Round



mm	CTW	14kt Complete	14kt Mounting
3	1/2	<b>\$1,575</b>	<b>\$499</b>
3.2	5/8	<b>\$1,655</b>	<b>\$505</b>
3.4	3/4	<b>\$1,655</b>	<b>\$505</b>



Asscher



mm	CTW	14kt Complete	14kt Mounting
3	3/4	<b>\$3,955</b>	<b>\$515</b>



Square



mm	CTW	14kt Complete	14kt Mounting
3	7/8	<b>\$2,459</b>	<b>\$665</b>
3.25	1	<b>\$2,739</b>	<b>\$665</b>
3.5	1 1/8	<b>\$2,725</b>	<b>\$649</b>

Available stone shapes



122141 Prong-Set Eternity Band



Round



mm	CTW	14kt Complete	14kt Mounting
1.5	1/2	<b>\$2,069</b>	<b>\$655</b>
1.7	5/8	<b>\$2,255</b>	<b>\$689</b>
2	3/4	<b>\$2,589</b>	<b>\$729</b>



Asscher



mm	CTW	14kt Complete	14kt Mounting
2	1 1/2	<b>\$6,735</b>	<b>\$675</b>
2.6	2 3/8	<b>\$10,625</b>	<b>\$919</b>



Square



mm	CTW	14kt Complete	14kt Mounting
1.5	1 1/8	<b>\$3,489</b>	<b>\$585</b>
2	1 3/8	<b>\$4,889</b>	<b>\$685</b>

Available stone shapes



LADIES' BANDS



122534 Prong-Set Eternity Band



Round



mm	CTW	14kt Complete	14kt Mounting
1.5	1/5	\$1,129	\$439
1.7	1/4	\$1,305	\$445
2	1/5	\$1,325	\$539



Asscher



mm	CTW	14kt Complete	14kt Mounting
2	3/10	\$4,195	\$549
2.6	1 1/5	\$5,655	\$769



Square



mm	CTW	14kt Complete	14kt Mounting
1.5	1/2	\$1,835	\$485
2	1/2	\$2,335	\$635

Available stone shapes



122571 Prong-Set Eternity Band

NEW



Round



mm	CTW	14kt Complete	14kt Mounting
1.2	1/2	\$2,149	\$539
1.3	5/6	\$2,345	\$545
1.5	7/8	\$2,685	\$549



Square



mm	CTW	14kt Complete	14kt Mounting
1.25	3/4	\$3,715	\$545
1.5	1 1/2	\$4,439	\$565

Available stone shapes



Available Metal Qualities



Platinum  
950



White Gold  
10kt  
14kt, 14kt X1®  
18kt



Yellow Gold  
10kt  
14kt  
18kt



Rose Gold  
10kt  
14kt  
18kt



**NEW** 122788  
Channel-Set  
Wedding  
Band



**Round**



mm	CTW	14kt Complete	14kt Mounting
1.5	.08	<b>\$1,075</b>	<b>\$839</b>
2	1/6	<b>\$1,335</b>	<b>\$969</b>



**Square**



mm	CTW	14kt Complete	14kt Mounting
1.5	1/6	<b>\$1,235</b>	<b>\$845</b>
2	1/6	<b>\$1,699</b>	<b>\$985</b>

*Available stone shapes*



**NEW** 122789  
Channel-Set  
Wedding  
Band



**Round**



mm	CTW	14kt Complete	14kt Mounting
1.5	.08	<b>\$1,169</b>	<b>\$935</b>
2	1/6	<b>\$1,335</b>	<b>\$975</b>



**Square**



mm	CTW	14kt Complete	14kt Mounting
1.25	1/10	<b>\$1,275</b>	<b>\$909</b>
2	1/6	<b>\$1,689</b>	<b>\$969</b>

*Available stone shapes*



**Available Metal Qualities**



**Platinum**  
950



**White Gold**  
10kt  
14kt  
18kt  
14kt X1®



**Yellow Gold**  
10kt  
14kt  
18kt



**Rose Gold**  
10kt  
14kt  
18kt





**NEW**

**122785**  
Channel-Set  
Wedding  
Band



**Round**



mm	CTW	14kt Complete	14kt Mounting
2.5	1/3	<b>\$1,825</b>	<b>\$1,129</b>
3	1/2	<b>\$2,575</b>	<b>\$1,259</b>
3.8	1	<b>\$4,829</b>	<b>\$1,475</b>



**Asscher**



mm	CTW	14kt Complete	14kt Mounting
2	1/4	<b>\$2,045</b>	<b>\$1,019</b>
2.6	1/2	<b>\$3,219</b>	<b>\$1,185</b>
3	3/4	<b>\$4,739</b>	<b>\$1,295</b>



**Square**



mm	CTW	14kt Complete	14kt Mounting
2	1/5	<b>\$1,735</b>	<b>\$1,019</b>
3	7/8	<b>\$3,519</b>	<b>\$1,305</b>
4	2	<b>\$10,869</b>	<b>\$1,625</b>

*Available stone shapes*



After a customer selects his stone shape and size,  
he chooses from 13 metal qualities — more  
choices than anyone else offers.



## ANNIVERSARY BANDS

Diamond Anniversary Band, 14kt yellow, 3z, size 7



3

BEST SELLER

**122787** 3- 4.1mm stones, ¾ CTW, **\$3,445.**

Mounting #122787, **\$535.**



5

BEST SELLER

**122808** 5- 3.75mm stones, 1 CTW, **\$3,299.**

Mounting #122808, **\$559.**



7

**122829** 7- 3mm stones, ¾ CTW, **\$2,165.**

Mounting #122829, **\$525.**



Diamond Anniversary Band, 14kt white, 3z, size 7



3

**122861** 3- 4.1mm stones, ¾ CTW, **\$3,485.**

Mounting #122861, **\$569.**



5

**122862** 5- 3.75mm stones, 1 CTW, **\$3,995.**

Mounting #122862, **\$589.**



7

**122863** 7- 3mm stones, ¾ CTW, **\$2,445.**

Mounting #122863, **\$549.**



Diamond Anniversary Band, 14kt white, 3z, size 7



3

**122832** 3- 3.5mm stones, ⅝ CTW, **\$2,335.**

Mounting #122832, **\$665.**



5

**122830** 5- 3mm stones, ¾ CTW, **\$2,859.**

Mounting #122830, **\$689.**



7

**122806** 7- 2.75mm stones, ¾ CTW, **\$3,355.**

Mounting #122836, **\$685.**



# ANNIVERSARY BANDS



Diamond Anniversary Band, 14kt white, 32, size 7



3

**122858** 3- 4.1mm stones,  
 $\frac{3}{4}$  CTW, **\$3,469.**

Mounting #122858, **\$559.**



5

**122859** 5- 3.75mm stones,  
 1 CTW, **\$3,939.**

Mounting #122859, **\$535.**



7

**122860** 7- 3mm stones,  
 $\frac{3}{4}$  CTW, **2,375.**

Mounting #122860, **\$485.**



**122614** Prong-Set Diamond Anniversary Band, 14kt rose, 32, size 7. Mounting #122614.



mm	2	2.5	3
CTW	$\frac{3}{8}$	$\frac{5}{8}$	$\frac{9}{10}$
Complete	<b>\$1,429</b>	<b>\$2,029</b>	<b>\$2,945</b>
Mounting	<b>\$555</b>	<b>\$585</b>	<b>\$609</b>

**122615** Bar-Set Diamond Anniversary Band, 14kt white, 32, size 7. Mounting #122615.



mm	2	2.5	3
CTW	$\frac{1}{3}$	$\frac{1}{2}$	$\frac{3}{4}$
Complete	<b>\$1,469</b>	<b>\$1,949</b>	<b>\$2,579</b>
Mounting	<b>\$689</b>	<b>\$715</b>	<b>\$745</b>

## ANNIVERSARY BANDS



**65612** Diamond Anniversary Band,  $\frac{1}{8}$  CTW, 14kt white, 109, size 7, **\$655**



**BEST SELLER**

**68880** Diamond Anniversary Band,  $\frac{3}{8}$  CTW, 14kt white, 32, size 7, **\$1,405**.  
Mounting #121870.



**651027** Diamond Anniversary Band,  $\frac{1}{4}$  CTW, 14kt white, 109, size 6, **\$1,239**



**122847** Diamond Anniversary Band,  $\frac{3}{8}$  CTW, 14kt white, 32, size 7, **\$1,429**.  
Mounting #122847.



**122752** Diamond Anniversary Band,  $\frac{1}{3}$  CTW, 14kt white, 32, size 7, **\$1,355**.  
Mounting #122752.



**122835** Diamond Anniversary Band,  $\frac{3}{8}$  CTW, 14kt white, 32, size 7, **\$1,289**.  
Mounting #122835.



**122905** Diamond Anniversary Band, .08 CTW, 14kt white, 32, size 7, **\$805**.  
Mounting #122905.



**122754** Diamond Anniversary Band,  $\frac{1}{2}$  CTW, 14kt white, 32, size 7, **\$1,495**.  
Mounting #122754.



**122846** Diamond Anniversary Band,  $\frac{3}{4}$  CTW, 14kt white, 22, size 7, **\$2,375**.  
Mounting #122846.

## ANNIVERSARY AND ETERNITY BANDS



**122751** Diamond Anniversary Band, ¼ ct stones (4.1mm), ¾ CTW, 14kt white, 32, size 7, **\$3,315**. Mounting #122846.



**122742** Diamond Anniversary Band, ¼ ct stones (4.1mm), .06 CTW, 14kt white, 32, size 7, **\$789**. Mounting #122742.



**122736** Diamond Anniversary Band, ¼ ct stones (4.1mm), .06 CTW, 14kt white, 32, size 7, **\$789**. Mounting #122736.



**69816** Diamond Eternity Band, ¼ CTW, 14kt white, 109, size 7, **\$1,889**



**69817** Diamond Anniversary Band, ⅛ CTW, 14kt white, 109, size 7, **\$1,179**



**BEST  
SELLER**

**121963** Diamond Eternity Band, ⅝ CTW, 14kt white, 32, size 7, **\$2,405**. Mounting #121963.



**651873** Diamond Anniversary Band, ¼ CTW, 14kt white, 35, size 6, **\$2,125**



**651964** Diamond Anniversary Band, ⅙ CTW, 14kt white, 109, size 6, **\$1,375**



**122681** Diamond Anniversary Band, .04 CTW, 14kt white, 32, size 7, **\$535**. Mounting #122681.

NEW

BANDS



**51582** Wheat Patterned Fancy Band, 3mm, 14kt white, size 7, **\$555**



**51580** Crescent Band with Faux Milgrain Design, 3mm, 14kt yellow, size 7, **\$409**



**51580** Crescent Band with Faux Milgrain Design, 5mm, 14kt white, size 7, **\$649**



**51579** Sculptural Patterned Band, 3mm, 14kt white, size 7, **\$315**



**51581** Sculptural Relief Patterned Band, 2.5mm, 14kt rose, size 7, **\$499**



**51581** Sculptural Relief Patterned Band, 4mm, 14kt white, size 7, **\$665**



**51537** Comfort-Fit Milgrain Band with Hammer Finish, 2mm, 14kt white, size 7, **\$445**; size 11, **\$485**



**51536** Flat Comfort-Fit Band with Milgrain, 2mm, 14kt white, size 7, **\$475**

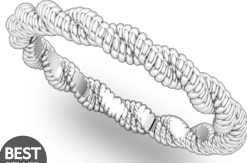


**51539** Half-Round Comfort-Fit Band with Milgrain, 2mm, 14kt yellow, size 7, **\$439**; size 11, **\$475**





**51566** Twisted Rope Band, 2mm, 14kt white, size 7, **\$189**



**BEST SELLER**

**254** Twisted Rope Band, 3mm, 14kt white, size 7, **\$365**



**50822** Handwoven Band, 2.5mm, 14kt white/rose/green, size 7, **\$609**



**51096** Hand-Engraved Band, 2mm, 14kt white, size 7, **\$905**; size 11, **\$1,119**



**51104** Hand-Engraved Band, 2mm, 14kt white, size 7, **\$905**; size 11, **\$1,119**



**51098** Hand-Engraved Band, 2mm, 14kt yellow, size 7, **\$849**; size 11, **\$1,055**



**50539** Granulated Scroll Fancy Band, 4mm, 14kt white, size 7, **\$545**



**NEW**

**51540** Comfort-Fit Milgrain Band, 2.5mm, 14kt yellow, size 7, **\$565**; size 11, **\$549**



**122720** Knife-Edge Comfort-Fit Diamond Band,  $\frac{1}{10}$  CTW, 4mm, 14kt white, 32, size 7, **\$1,015**; size 11, **\$1,109**. Mounting #122720, size 7, **\$705**; size 11, **\$799**.

NEW

CONTOUR BANDS



**122759** Diamond Contour Band, ¼ CTW, 14kt white, 32, size 7, **\$1,125**. Mounting #122759.



**122783** Diamond Contour Band with Milgrain, ⅛ CTW, 14kt white, 32, size 7, **\$959**. Mounting #122783.



**122758** Channel-Set Diamond Contour Band, ⅕ CTW, 14kt white, 32, size 7, **\$1,355**. Mounting #122758.



**122786** Metal Contour Band, 14kt white, size 7, **\$259**



**122760** Diamond Contour Band, ⅛ CTW, 14kt white, 32, size 7, **\$909**. Mounting #122760.



**652105** Diamond Contour Band, ⅓ CTW, 14kt white, 109, size 7, **\$2,355**

**122737** Diamond Contour Band, ⅙ CTW, 32, size 7. Mounting #122737.



14kt white, **\$619**



14kt yellow, **\$625**



14kt rose, **\$625**

## RING GUARDS



NEW

**652106** Diamond Ring Guard with Milgrain, 1/2 CTW, 14kt white, 109, size 7, **\$2,409**



NEW

**652101** Diamond Ring Guard, 1/2 CTW, 14kt white, 109, size 7, **\$1,829**



BEST SELLER

**122245** Diamond Ring Guard, 1/5 CTW, 14kt white, 32, size 7, **\$1,239**.  
Mounting #122245.



NEW

**651995** Diamond Ring Guard, 1/4 CTW, 14kt white, 109, size 7, **\$1,279**



NEW

**651993** Diamond Ring Guard, 1/2 CTW, 14kt white, 109, size 7, **\$1,905**



NEW

**651992** Diamond Ring Guard, 1/5 CTW, 14kt white, 109, size 7, **\$1,655**



BEST SELLER

**10144** Metal Ring Guard, 14kt white, size 7, **\$419**



NEW

**122772** Metal Ring Guard, 14kt white, size 7, **\$605**



BEST SELLER

**4022** Metal Ring Guard, 14kt white, size 7, **\$469**



## Custom Bridal At Your Fingertips

Give customers a compelling customization experience with Ever&Ever, a bridal selling system featuring 122 customizable 3C designs. We fully support it with—

- A complete consumer marketing program ready for your logo.
- A Product Guide with images of all styles in the available stone shapes.
- A unique, compatible Ever&Ever web experience for customers.
- Next-day delivery on all kit styles as shown in 14kt white and 10-day delivery on customized designs.
- Twice a year product refreshes with new prototypes available for purchase



A. 71602 | B. 122316 | C. 122200 | D. 122728 | E. 51234

651854 Ever&Ever Comprehensive Engagement Selling System, \$4,799

651854 Ever&Ever Core Engagement Selling System, \$1,299

Learn more at [Stuller.com/EverAndEver](http://Stuller.com/EverAndEver).

# One Ring

## Endless Possibilities

---

Your customers select a 14kt white Ever&Ever design that has a cushion center stone.



They'd like to try an oval diamond center. It's beautiful but not quite their vision.



Have they considered an emerald-shaped emerald? One look and they know that's the stone and shape they want. Still, it needs something extra.



You suggest a yellow gold bezel around the emerald. "We love it," they say.





Above: **122755** Diamond Eternity Band, ½ CTW, 14kt white, 32, size 7, **\$1,215**.  
Mounting #122755. | **51343** Grooved Flat-Edge Band with Bead Blast and Polished  
Finish, 7mm, 14kt yellow/white/yellow, size 7, **\$969**; size 11, **\$1,215**  
**FE** Flat-Edge Band, 5mm, 14kt white, size 10, **\$539**

Front cover: **122892** Emerald-Shape Semi-Mount Engagement, set with genuine morganite  
2½ ct center (9x7mm), ½ CTW, 14kt rose, 32, size 7, **\$2,475**. Mounting #122892. (also featured on pg. 25)  
**122893** Matching Diamond Band, ⅓ CTW, 14kt rose, 32, size 7, **\$975**. Mounting #122893.

*Suggested retail prices based on \$1,200 gold, \$1,200 platinum, and \$17 silver metal markets.  
Contemporary metals prices do not fluctuate with metal market. | Items shown larger than actual  
size. Diamond quality is SI2-3, G-H color, except in complete engagements. For stone code references,  
current pricing and availability, and to see the entire collections, visit [Stuller.com](http://Stuller.com).*

01/2016 MKTGMEDIA:9284

Stuller.com | 800 877 7777