

BRIDAL & BANDS

OCTOBER 2018

Once
Upon A
Time

For the modern couple



 STULLER



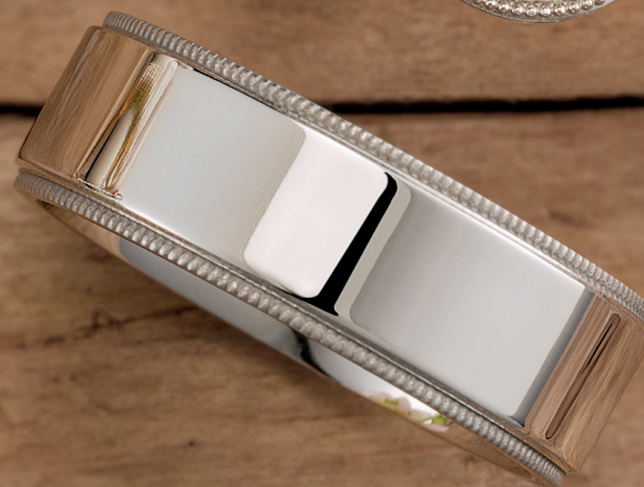
It's not just *any* diamond.

It's *the* diamond.

Each Stuller Diamond™ is hand selected and goes through rigorous grading and screening to ensure our guarantee of integrity.

Find your diamond at [Stuller.com/FindADiamond](https://www.stuller.com/FindADiamond).

Meaningful and Mesmerizing



This season's bridal brochure is all about providing you with the most fresh and on-trend bridal styles to help you through the holidays. Whether you want flexible 3C engagement rings, trendy stackable rainbow bands, or new men's wedding bands, we have what you need. And remember, we are always here to support you through your busiest seasons.

H. **123787** Diamond Anniversary Band, ½ CTW, 32, size 7, 14K White, \$1,555. Mounting **123787**, \$539. | J. **123871** Round-Shape Halo-Style Semi-Set Engagement Ring, 1 CT center (6.5mm), ⅙ CTW, 14K White, \$1,098. Mounting **123871**, \$659. | K. **123871** Matching Diamond Band, 14K White, 32, size 7, \$1,065. Mounting **123871**, \$515. | L. **MGRF10** Milgrain Flat Comfort-Fit Band, 6mm width, 14K White, size 10, \$959

FLEXIBLE 3C DESIGNS OFFER YOU EASY, BUILT-IN CUSTOMIZATION TOOLS SO YOU CAN CREATE THE LOOK YOU WANT.

3C



1

CHOOSE A SHAPE

Every 3C design is available with the widest range of shapes possible. Each shape pairing is meticulously designed to flow together preserving the elegance of the original style.



2

CHOOSE A SIZE

Choose from the broadest range of standard sizes available — from the smallest to the largest stone.



3

CHOOSE A METAL QUALITY

All 3C designs are available in 13 metal qualities.



4

ADD A CUSTOM FIT MATCHING BAND

A beautiful matching band option is available with every 3C engagement ring.



A. **121987** Round-Shape Halo-Style Semi-Set Engagement Ring, ½ CT center (5.2mm), ½ CTW, 14K Yellow, size 7, \$1,449. Mounting **121987**, \$415. Shown with **Genuine Morganite**. | B. **Genuine Yellow Sapphire**, Round, 1-2 CT, eye-clean, Call for pricing. | C. **121987** Round-Shape Halo-Style Semi-Set Engagement Ring, 2 CT center (8mm), ½ CTW, 14K Rose, 32, size 7, \$1,505. Mounting **121987**, \$415. | D. **121987** Pear-Shape Halo-Style Semi-Set Engagement Ring, 1½ CT center (9x6mm), ½ CTW, 14K White, 32, size 7, \$1,559. Mounting **121987**, \$415. | E. **Genuine Pink Sapphire**, Oval, 1-2 CT, eye-clean, Call for pricing. | F. **Genuine Orange Sapphire**, Oval, 1-2 CT, eye-clean, Call for pricing. | G. **Genuine Blue Sapphire**, Pear, 1-2 CT, eye-clean, Call for pricing. | H. **Genuine Diamond**, Round, 0.03 CT, VS, G-H, \$80.19

At First Sight

Phenomenal, precious, perfect



A. **123831** Round-Shape Halo-Style Semi-Set Engagement Ring, 1 CT center (6.5mm), 1/2 CTW, 14K Yellow, 32, size 7, \$2,249. Mounting **123831**, \$825 | B. **123768** Pear-Shape Halo-Style Semi-Set Engagement Ring, 1/2 CT center (7x5mm), 3/4 CTW, 14K White, 32, size 7, \$1,949. Mounting **123768**, \$535 | C. **123902** Round-Shape Halo-Style Semi-Set Engagement Ring, 1 CT center (6.5mm), 3/4 CTW, 14K Rose, 32, size 7, \$2,089. Mounting **123902**, \$629 | D. **123902** Matching Diamond Band, 1/4 CTW, 14K Rose, 32, size 7, \$1,235. Mounting **123902**, \$419.



Available center stone shapes:



F



Available center stone shapes:

E. **123426**
 Oval-Shape French-Set Semi-Set Engagement Ring, 3/4 CT center (7x5mm), 3/8 CTW, 14K White, 32, size 7, \$1,555. Mounting **123426**, \$479.
 Shown with **LDIA-GEN-901408-G** 3/4 CT, H, SI2.

123427
 Matching French-Set Diamond Band, 3/8 CTW, 14K White, 32, size 7, \$1,969. Mounting **123427**, \$359.

F. **123902**
 Round-Shape Halo-Style Semi-Set Engagement Ring, 1 CT center (6.5mm), 3/4 CTW, 14K White, 29, size 7, \$1,809. Mounting **123902**, \$629. Shown with **LDIA-GEN-903082-G** 1 CT, F, VS2.

123902
 Matching Diamond Band, 1/4 CTW, 14K White, 32, size 7, \$1,235. Mounting **123902**, \$419.

G. **123746**
 Oval-Shape Semi-Set Engagement Ring, 1 CT center (8x6mm), 1/4 CTW, 14K Yellow, 32, size 7, \$2,029. Mounting **123746**, \$959. Shown with **LDIA-GEN-901462-G** 1 CT, G, SI2.

123747
 Matching Diamond Band, 1/8 CTW, 14K Yellow, 32, size 7, \$939. Mounting **123747**, \$325.



H



J



K

Available center stone shapes:

H. **123579**
 Round-Shape French-Set Semi-Set Engagement Ring, 1 CT center (6.5mm), 1/2 CTW, 14K White, 32, size 7, \$1,829. Mounting **123579**, \$435.
 Shown with **LDIA-GEN-903055-G** 1 CT, E, SI2.

123579
 Matching French-Set Diamond Band, 1/4 CTW, 14K White, 32, size 7, \$1,635. Mounting **123579**, \$25.

J. **123774**
 Round-Shape Halo-Style Semi-Set Engagement Ring, 1 CT center (6.5mm), 3/4 CTW, 14K Yellow, 26, 29, 32, size 7, \$2,465. Mounting **123774**, \$529.
 Shown with **LDIA-GEN-903088-G** 1 CT, K, VS2.

123774
 Matching Diamond Band, 1/8 CTW, 14K Yellow, 32, size 7, \$905. Mounting **123774**, \$359.

K. **123748**
 Pear-Shape Semi-Set Engagement Ring, 1 1/2 CT center (9x6mm), 1/2 CTW, 14K White, 32, size 7, \$2,265. Mounting **123748**, \$789.
 Shown with **LDIA-GEN-902367-G** 1 1/2 CT, G, VS2.

123749
 Matching Diamond Band, 1/4 CTW, 14K White, 32, size 7, \$1,185. Mounting **123749**, \$349.



L



M



N

Available center stone shapes:

L. **123687**
 Oval-Shape French-Set Semi-Set Engagement Ring, 1 CT center (8x6mm), 1/2 CTW, 14K White, 32, size 7, \$1,725. Mounting **123687**, \$479.
 Shown with **LDIA-GEN-901452-G** 1 CT, F, SI1.

123687
 Matching Diamond Band, 1/4 CTW, 14K White, 32, size 7, \$1,559. Mounting **123687**, \$369.

M. **123772**
 Round-Shape Halo-Style Semi-Set Engagement Ring, 1 CT center (6.5mm), 3/4 CTW, 14K Rose, 21, 32, size 7, \$2,335. Mounting **123772**, \$545.
 Shown with **LDIA-GEN-903057-G** 1 CT, G, SI2.

123772
 Matching Diamond Band, 1/8 CTW, 14K Rose, 32, size 7, \$989. Mounting **123772**, \$439.

N. **123567**
 Round-Shape Halo-Style Semi-Set Engagement Ring, 1 CT center (6.5mm), 1/2 CTW, 14K Rose, 32, size 7, \$3,009. Mounting **123567**, \$955.
 Shown with **LDIA-GEN-903084-G** 1 CT, H, VS2.

123568
 Matching Diamond Band, 1/8 CTW, 14K Rose, 32, size 7, \$965. Mounting **123568**, \$325.

HEART AND FLORAL ENGAGEMENT RINGS

VINTAGE-INSPIRED ENGAGEMENT RINGS



A



D



G



K



N



R



B



E



H



L



P



S



C



F



J



M



Q



T

A. 123878
Round-Shape Semi-Set Engagement Ring, 1 CT center (6.5mm), 1/4 CTW, 14K White, 32, size 7, \$1,465.
Mounting **123878**, \$555. Shown with **LDIA-GEN-903099-G** 1 CT, VVS2, F.

123878
Matching Diamond Band, 1/4 CTW, 14K White, 32, size 7, \$1,229. Mounting **123878**, \$345.

B. 123880
Round-Shape Semi-Set Engagement Ring, 1 CT center (6.5mm), 0.025 CTW, 14K Rose, 32, size 7, \$665.
Mounting **123880**, \$549. Shown with **LDIA-GEN-903080-G** 1 CT, VS2, D.

123880
Matching Diamond Band, 1/4 CTW, 14K Rose, 32, size 7, \$695. Mounting **123880**, \$325.

C. 123781
Round-Shape Halo-Style Semi-Set Engagement Ring, 1 CT center (6.5mm), 1/2 CTW, 14K Yellow, 32, size 7, \$1,779.
Mounting **123781**, \$759. Shown with **LDIA-GEN-903074-G** 1 CT, VS1, I.

123781 Matching Diamond Band, 1/4 CTW, 14K Yellow, 32, size 7, \$785. Mounting **123781**, \$489.

D. 123875
Round-Shape Halo-Style Semi-Set Engagement Ring, 1 CT center (6.5mm), 1/4 CTW, 14K Yellow, 32, size 7, \$1,125. Mounting **123875**, \$549.
Shown with **LDIA-GEN-903043-G** 1 CT, SI1, F.

123875
Matching Band, 14K Yellow, size 7, \$445

E. 123739
Round-Shape Solitaire Engagement Ring Mounting, 1 CT stone (6.5 mm), 14K White, size 7, \$485.
Shown with **LDIA-GEN-903042-G** 1 CT, SI1, E.

123739
Matching Band, 14K White, size 7, \$405

F. 123723
Round-Shape Semi-Set Engagement Ring, 1 CT center (6.5mm), 1/2 CTW, 14K Rose, 32, size 7, \$1,925.
Mounting **123723**, \$675. Shown with **LDIA-GEN-903071-G** 1 CT, VS1, F.

123723
Matching Diamond Band, 3/4 CTW, 14K Rose, 32, size 7, \$1,519. Mounting **123723**, \$345.

G. 123876
Round-Shape Semi-Set Engagement Ring, 1 CT center (6.5mm), 1/4 CTW, 14K Rose, 32, size 7, \$969.
Mounting **123876**, \$595. Shown with **LDIA-GEN-903057-G** 1 CT, G, SI2.

123876
Matching Diamond Band, 1/4 CTW, 14K Rose, 32, size 7, \$1,219. Mounting **123876**, \$545.

H. 123376
Round-Shape Semi-Set Engagement Ring, 1 CT center (6.5mm), 3/4 CTW, 14K Yellow, 26, size 7, \$2,399.
Mounting **123376**, \$449. Shown with **LDIA-GEN-903054-G** 1 CT, SI2, D.

123376
Matching Diamond Band, 1/4 CTW, 14K Yellow, 32, size 7, \$1,045. Mounting **123376**, \$325.

J. 123693
Round-Shape Semi-Set Engagement Ring, 1 CT center (6.5mm), 1/2 CTW, 14K White, 32, size 7, \$1,739.
Mounting **123693**, \$965. Shown with **LDIA-GEN-903056-G** 1 CT, SI2, F.

123693
Matching Diamond Band, 1/2 CTW, 14K White, 32, size 7, \$945. Mounting **123693**, \$445.

K. 123816
Emerald-Shape Semi-Set Engagement Ring, 1 1/4 CT center (8x6mm), 0.04 CTW, 14K White, 32, size 7, \$779.
Mounting **123816**, \$605. Shown with **LDIA-GEN-936101-G** 1 1/4 CT, SI1, D.

123816
Matching Diamond Band, 1/2 CTW, 14K White, 32, size 7, \$995. Mounting **123816**, \$369.

L. 123767
Marquise-Shape Halo-Style Semi-Set Engagement Ring, 1 CT center (10x5mm), 1/2 CTW, 14K Rose, 23, 32, size 7, \$1,239. Mounting **123767**, \$569.
Shown with **LDIA-GEN-901110-G** 1 CT, SI1, H.

123767
Matching Diamond Band, 0.07 CTW, 14K Rose, 32, size 7, \$689. Mounting **123767**, \$449.

M. 123831
Round-Shape Halo-Style Semi-Set Engagement Ring, 1 CT center (6.5mm), 1/2 CTW, 14K White, 32, size 7, \$2,275. Mounting **123831**, \$829.
Shown with **LDIA-GEN-903038-G** 1 CT, IF, D.

123831
Matching Diamond Band, 1/2 CTW, 14K White, 32, size 7, \$1,149. Mounting **123831**, \$629.

N. 123814
Round-Shape Semi-Set Engagement Ring, 1 CT center (6.5mm), 0.03 CTW, 14K White, 32, size 7, \$755.
Mounting **123814**, \$659. Shown with **LDIA-GEN-903084-G** 1 CT, VS2, H.

123814
Sculptural Matching Band, 14K White, size 7, \$479

P. 123768
Pear-Shape Halo-Style Semi-Set Engagement Ring, 1 1/2 CT center (9x6mm), 3/4 CTW, 14K White, 23, 32, size 7, \$2,005. Mounting **123768**, \$565.
Shown with **LDIA-GEN-902354-G** 1 1/2 CT, SI2, G.

123768
Matching Diamond Band, 1/4 CTW, 14K White, 32, size 7, \$1,389. Mounting **123768**, \$429.

Q. 123827
Round-Shape Vintage-Inspired Semi-Set Engagement Ring, 1 CT center (6.5mm), 3/4 CTW, 14K White, 32, size 7, \$2,265. Mounting **123827**, \$849.
Shown with **LDIA-GEN-903060-G** 1 CT, SI2, I.

123827
Matching Diamond Band, 1/2 CTW, 14K White, 32, size 7, \$1,379. Mounting **123827**, \$689.

R. 123842
Round-Shape Semi-Set Engagement Ring, 1 CT center (6.5mm), 1/4 CTW, 14K White, 21, 32, size 7, \$915.
Mounting **123842**, \$559. Shown with **LDIA-GEN-903042-G** 1 CT, SI1, E.

123842
Matching Diamond Band, 1/2 CTW, 14K White, 32, size 7, \$925. Mounting **123842**, \$419.

S. 123733
Marquise-Shape Halo-Style Semi-Set Engagement Ring, 1 CT center (10x5mm), 1/2 CTW, 14K Yellow, 32, size 7, \$959. Mounting **123733**, \$615.
Shown with **LDIA-GEN-901116-G** 1 CT, SI2, E.

123733
Matching Band, 14K Yellow, size 7, \$355

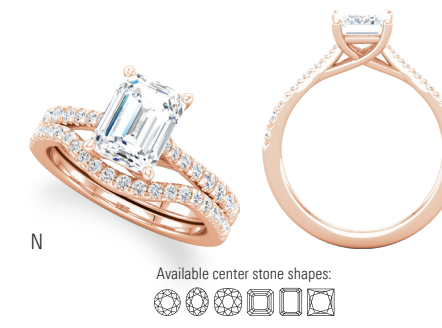
T. 123833
Round-Shape Halo-Style Semi-Set Engagement Ring, 1 CT center (6.5mm), 1/4 CTW, 14K White, 32, size 7, \$2,029. Mounting **123833**, \$809.
Shown with **LDIA-GEN-903044-G** 1 CT, SI1, G.

123833
Matching Diamond Band, 0.08 CTW, 14K White, 32, size 7, \$735. Mounting **123833**, \$475.

Available center stone shapes:

Available center stone shapes:

Available center stone shapes:



A. 123823
Emerald-Shape Solitaire Engagement Ring Mounting, 1¼ CT stone (7×5mm), 14K Rose, size 7, \$449. Shown with **LDIA-GEN:900523-G** 1¼ CT, I, SI1.

51888
Matching Band, 14K Rose, size 7, \$389

B. 123650
Square-Shape Semi-Set Engagement Ring, 1¼ CT stone (6×6mm), 0.01 CTW, 14K Yellow, 32, size 7, \$555. Mounting **123650**, \$555. Shown with **LDIA-GEN:901958-G** 1¼ CT, E, SI2.

51841
Matching Band, 14K Yellow, size 7, \$405

C. 123648
Round-Shape Semi-Set Engagement Ring, 1¼ CT center (7.0mm), ½ CTW, 14K White, 32, size 7, \$1,859. Mounting **123648**, \$555. Shown with **LDIA-GEN:903144-G** 1¼ CT, G, SI2.

123649
Matching Diamond Band, ½ CTW, 14K White, 32, size 7, \$1,855. Mounting **123649**, \$465.

D. 123713
Pear-Shape Solitaire Engagement Ring Mounting, ¾ CT stone (8×6mm), 14K White, size 7, \$569. Shown with **LDIA-GEN:902346-G** 1 CT, H, SI1.

51858
Matching Band, 14K White, size 7, \$499

E. 123599
Marquise-Shape Semi-Set Engagement Ring, 1 CT center (10×5mm), ½ CTW, 14K Two-Tone, 32, size 7, \$639. Mounting **123599**, \$639. Shown with **LDIA-GEN:901116-G** 1 CT, E, SI2.

51837
Matching Band, 14K Rose, size 7, \$529

F. 123697
Round-Shape Semi-Set Engagement Ring, 1¼ CT center (7.0mm), ½ CTW, 14K White, 32, size 7, \$1,559. Mounting **123697**, \$615. Shown with **LDIA-GEN:903145-G** 1¼ CT, H, SI2.

123698
Matching Diamond Band, ¾ CTW, 14K White, 32, size 7, \$1,669. Mounting **123698**, \$539.

G. 123639
Oval-Shape Bezel-Set Solitaire Engagement Ring Mounting, 1 CT center (8×6mm), 0.03 CTW, 14K Rose, 32, size 7, \$729. Mounting **123639**, \$619. Shown with **LDIA-GEN:901461-G** 1 CT, F, SI2.

51840
Matching Band, 14K Rose, size 7, \$485

H. 123636
Cushion-Shape Semi-Set Engagement Ring, 2 CT center, (7×7mm), 0.01 CTW, 14K Yellow, 32, size 7, \$575. Mounting **123636**, \$495. Shown with **LDIA-GEN:908331-G** 2 CT, H, SI2.

51839
Matching Band, 14K Yellow, 32, size 7, \$459

J. 123651
Round-Shape Semi-Set Engagement Ring, 1¼ CT center (7.0mm), ¾ CTW, 14K White, 32, size 7, \$1,655. Mounting **123651**, \$539. Shown with **DIA-GEN:903152-G** 1¼ CT, F, VS1.

123652
Matching Diamond Band, ½ CTW, 14K White, 32, size 7, \$1,749. Mounting **123652**, \$449.

K. 123229
Round-Shape French-Set Semi-Set Engagement Ring, 1¼ CT center (7mm), ½ CTW, 14K White, 32, size 7, \$1,645. Mounting **123229**, \$449. Shown with **LDIA-GEN:903110-G** 1¼ CT, H, I1.

123891 Matching French-Set Diamond Band, ¾ CTW, 14K White, 32, size 7, \$1,739. Mounting **123891**, \$395.

L. 123451
Oval-Shape French-Set Halo-Style Semi-Set Engagement Ring, 1 CT center (8×6mm), ¾ CTW, 14K Rose, 32, size 7, \$3,139. Mounting **123451**, \$829. Shown with **LDIA-GEN:901464-G** 1 CT, I, SI2.

123892
Matching French-Set Diamond Band, ½ CTW, 14K Rose, 32, size 7, \$1,909. Mounting **123892**, \$539.

M. 123481
Emerald-Shape French-Set Halo-Style Semi-Set Engagement Ring, 1¼ CT center (8×6mm), ¾ CTW, 14K White, 32, 241, size 7, \$6,319. Mounting **123481**, \$709. Shown with **LDIA-GEN:900638-G** 1¼ CT, E, SI1.

123895
Matching French-Set Diamond Band, ½ CTW, 14K White, 32, size 7, \$1,625. Mounting **123895**, \$455.

N. 123230
Emerald-Shape French-Set Semi-Set Engagement Ring, 1¼ CT center (8×6mm), ½ CTW, 14K Rose, 32, size 7, \$1,365. Mounting **123230**, \$515. Shown with **LDIA-GEN:900616-G** 1¼ CT, H, VS1.

123890
Matching French-Set Diamond Band, ½ CTW, 14K Rose, 32, size 7, \$1,419. Mounting **123890**, \$409.

P. 123861
Cushion-Shape French-Set Halo-Style Semi-Set Engagement Ring, 2 CT center (7×7mm), ½ CTW, 14K White, 32, size 7, \$2,599. Mounting **123861**, \$675. Shown with **LDIA-GEN:906283-G** 2 CT, G, SI1.

123862
Matching Diamond Band, ¼ CTW, 14K White, 32, size 7, \$1,339. Mounting **123862**, \$439.

Q. 123457
Round-Shape French-Set Semi-Set Engagement Ring, 1¼ CT center (7.0mm), ½ CTW, 14K Yellow, 32, size 7, \$1,699. Mounting **123457**, \$479. Shown with **LDIA-GEN:903144-G** 1¼ CT, G, SI2.

123889
Matching French-Set Diamond Band, ¼ CTW, 14K Yellow, 32, size 7, \$1,595. Mounting **123889**, \$405.

R. 123450
Oval-Shape French-Set Semi-Set Engagement Ring, 1 CT center (8×6mm), ½ CTW, 14K White, 32, size 7, \$1,379. Mounting **123450**, \$459. Shown with **LDIA-GEN:901467-G** 1 CT, E, VS1.

123887
Matching French-Set Diamond Band, ¼ CTW, 14K White, 32, size 7, \$1,419. Mounting **123887**, \$365.

S. 123227
Pear-Shape French-Set Halo-Style Semi-Set Engagement Ring, ¾ CT center (8×6mm), ½ CTW, 14K Rose, 32, size 7, \$1,915. Mounting **123227**, \$525. Shown with **LDIA-GEN:902343-G** 1 CT, E, SI1.

123888
Matching French-Set Diamond Band, ¼ CTW, 14K Rose, 32, size 7, \$1,325. Mounting **123888**, \$359.

T. 123449
Oval-Shape French-Set Halo-Style Semi-Set Engagement Ring, 1 CT center (8×6mm), ½ CTW, 14K White, 32, size 7, \$1,345. Mounting **123449**, \$599. Shown with **LDIA-GEN:901470-G** 1 CT, H, VS1.

51923
Matching Band, 14K White, size 7, \$459

EAST-WEST ENGAGEMENT RINGS



A. 123725
Emerald-Shape Halo-Style Semi-Set Engagement Ring, 1 ¼ CT center (7×5mm), ½ CTW, 14K White, 32, size 7, \$1,569. Mounting 123725, \$509.
Shown with **LDIA-GEN:911711-G** 1 ¼ CT, D, VS2.

123725
Matching Diamond Band, ½ CTW, 14K White, 32, size 7, \$1,139. Mounting 123725, \$389.



B. 123654
Oval-Shape Halo-Style Semi-Set Engagement Ring, 1 CT center (8×6mm), ½ CTW, 14K Yellow, 32, size 7, \$939. Mounting 123654, \$459. Shown with **LDIA-GEN:901462-G** 1 CT, G, SI2.

123274
Matching Diamond Band, ¼ CTW, 14K Yellow, 32, size 7, \$1,015. Mounting 123274, \$329.



C. 123066
Marquise-Shape Halo-Style Semi-Set Engagement Ring, ¾ CT center (10×5mm), ½ CTW, 14K Rose, 32, size 7, \$1,429. Mounting 123066, \$459.
Shown with **LDIA-GEN:901106-G** 1 CT, D, SI1.

122145
Matching Diamond Band, ¼ CT, 14K Rose, 32, size 7, \$1,029. Mounting 122145, \$345.



D. 123792
Oval-Shape Halo-Style Semi-Set Engagement Ring, ¾ CT center (7×5mm), ½ CTW, 14K Yellow, 32, size 7, \$2,495. Mounting 123792, \$835.
Shown with **LDIA-GEN:901411-G** ¾ CT, D, VS1.

123792
Matching Diamond Band, ½ CTW, 14K Yellow, 32, size 7, \$1,569. Mounting 123792, \$445.



E. 123794
Cushion-Shape Semi-Set Engagement Ring, 2 CT center (7×7mm), 0.08 CTW, 14K Rose, 32, size 7, \$999. Mounting 123794, \$689. Shown with **LDIA-GEN:906560-G** 2 CT, I, VS2.

51972
Matching Band, 14K Rose, size 7, \$409

F. 123770
Marquise-Shape Halo-Style Semi-Set Engagement Ring, ½ CT center (8×4mm), ¾ CTW, 14K White, 26, 32, size 7, \$2,375. Mounting 123770, \$559.
Shown with **LDIA-GEN:901011-G** ½ CT, E, SI2.

123770
Matching Diamond Band, ¾ CTW, 14K White, 32, size 7, \$1,529. Mounting 123770, \$435.



G. 123641
Pear-Shape Halo-Style Semi-Set Engagement Ring, ¾ CT center (8×5mm), 0.01 CTW, 14K Rose, 32, size 7, \$1,999. Mounting 123641, \$629.
Shown with **LDIA-GEN:902292-G** ¾ CT, G, SI1.

123642
Matching Diamond Band, ¼ CTW, 14K Rose, 32, size 7, \$1,225. Mounting 123642, \$389.



H. 123505
Round-Shape Floral Halo-Style Semi-Set Engagement Ring, 1 CT center (6.5mm), ½ CTW, 14K White, 32, size 7, \$1,039. Mounting 123505, \$525.
Shown with **LDIA-GEN:903005-G** 1 CT, G, I1.

123505
Matching Diamond Band, 0.05 CTW, 14K White, 32, size 7, \$615. Mounting 123505, \$419.

J. 123355
Round-Shape Halo-Style Semi-Set Engagement Ring, 1 CT center (6.5mm), ¼ CTW, 14K Yellow, 32, 23, size 7, \$1,269. Mounting 123355, \$535.
Shown with **LDIA-GEN:903099-G** 1 CT, F, WS2.

123355
Matching Diamond Band, ¼ CTW, 14K Yellow, 32, size 7, \$879. Mounting 123355, \$449.

ON-TREND ENGAGEMENT RINGS



K. 123793
Round-Shape Double Halo-Style Semi-Set Engagement Ring, ½ CT center (5.2mm), ¾ CTW, 14K White, 32, size 7, \$1,909. Mounting 123793, \$695.
Shown with **LDIA-GEN:902896-G** ½ CT, F, VS2.

123793
Matching Diamond Band, ½ CTW, 14K White, 32, size 7, \$1,265. Mounting 123793, \$419.



L. 123871
Round-Shape Halo-Style Semi-Set Engagement Ring, 1 CT center (6.5mm), ½ CTW, 14K Rose, 32, size 7, \$1,085. Mounting 123871, \$649.
Shown with **LDIA-GEN:903041-G** 1 CT, D, SI1.

123871
Matching Diamond Band, ½ CTW, 14K Rose, 32, size 7, \$1,049. Mounting 123871, \$499.

M. 123789
Round-Shape Halo-Style Semi-Set Engagement Ring, 1 CT center (6.5mm), ¼ CTW, 14K White, 32, size 7, \$1,505. Mounting 123789, \$555.
Shown with **LDIA-GEN:903006-G** 1 CT, H, I1.

123789
Matching Diamond Band, 0.08 CTW, 14K White, 32, size 7, \$795. Mounting 123789, \$465.

Mesmerizing Hues

When your customer wants a dazzling gemstone, trust our exquisite selection of individually graded and calibrated gemstones. Whether you're looking for a fancy-colored natural sapphire or a one-of-a-kind, specialty cut moissanite, our selection guarantees that you will always find what you want.

Visit [Stuller.com/Gemstones](https://www.stuller.com/Gemstones).



A. Genuine Green Sapphire, Oval, 1-2 CT, eye-clean, Call for pricing. | **B. Forever One™ Created Moissanite**, Round, 6.5mm, Colorless- DEF, \$720.00 | **C. 122996** Round-Shape Semi-Set Engagement Ring, 1- 6.5mm center, ½ CTW, 14K Rose, 32, \$1,579. Shown with **Genuine London Blue Topaz**. | **D. 123725** Oval-Shape Halo-Style Semi-Set Engagement Ring, 1- 8×6mm center, ½ CTW, 14K Yellow, 32, \$1,599. Set with **Genuine Purple Sapphire**. | **E. 123869** One-of-a-Kind Emerald and Diamond Ring, 1- 9×7mm center, 1½ CTW, Platinum, 26, 32, 51, \$19,928 | **F. Genuine Purple Sapphire**, Oval, 1-2 CT, eye-clean, Call for pricing. | **G. Genuine Blue Sapphire**, Marquise, 3.5x2mm, AA, \$80.85 | **H. Exotic Moissanite**, Round, 13.0mm, Near Colorless- GHI, Call for pricing. | **J. Genuine Pink Sapphire**, Round- Precision-cut, 2.25mm, A, \$61.95 | **K. Forever One™ Created Moissanite**, Round, 3.0mm, Colorless- DEF, \$78.00. | **L. Genuine Blue Sapphire**, Round, 2.0mm, AA, \$55.50

CONTOUR BANDS



A. 123866
Diamond Contour Band, 1/6 CTW, 14K Rose, 32, size 7,
\$889. Mounting **123866**, \$359.

B. 123762
Diamond Contour Band, 1/6 CTW, 14K White, 26, 32,
size 7, \$1,009. Mounting **123762**, \$419.

C. 123510
Diamond Contour Band, 0.06 CT, 14K Yellow, 32, size 7,
\$749. Mounting **123510**, \$579.

D. 123756
Diamond Ring Guard, 5/10 CTW, 14K Rose, 26, 32, size 7,
\$2,615. Mounting **123756**, \$669.

E. 123941
Diamond Contour Band, 1/10 CTW, 14K Rose, 32, 117,
size 7, \$1,219. Mounting **123941**, \$445.

F. 123872
Diamond Contour Band, 1/4 CTW, 14K White, 26, 32,
size 7, \$1,269. Mounting **123872**, \$455.

G. 123759
Diamond Contour Band, 0.01 CTW, 14K Yellow, 26, 32,
size 7, \$625. Mounting **123759**, \$365.

H. 123763
Diamond Ring Guard, 1/10 CTW, 14K Yellow, 26, size 7,
\$1,085. Mounting **123763**, \$779.

J. 123848
Diamond Contour Band, 0.025 CTW, 14K Rose, 32, size 7,
\$505. Mounting **123848**, \$389.

K. 123847
Diamond Contour Band, 1/10 CTW, 14K White, 32, size 7,
\$735. Mounting **123847**, \$419.

L. 123760
Diamond Contour Band, 1/10 CTW, 14K Yellow, 32, size 7,
\$859. Mounting **123760**, \$415.

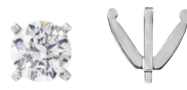
M. 123819
Diamond Ring Guard, 0.05 CTW, 14K White, 32, size 7,
\$999. Mounting **123819**, \$785.



It's not just *any* diamond.
It's *the* diamond.

Each Stuller Diamond™ is hand selected and goes through rigorous grading and screening to ensure our guarantee of integrity.

Find your diamond at [Stuller.com/FindADiamond](https://www.stuller.com/FindADiamond).



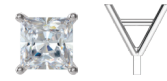
29917
Round-Shape Pre-Notched 4-Prong Peg Setting, ¾ - 1½ CT (6-6.6mm) stone range, 6.1mm height, 14K White, \$65

DIE STRUCK



29735
Round-Shape 6-Prong Peg Setting with Milgrain, 1 CT stone (6.5mm), 8.2mm height, 14K White, \$125

METAL MOLD



29955
Square-Shape Cocktail-Style 4-Prong Peg Setting, 1 CT stone (5.5×5.5mm), 6.4mm height, 14K White, \$55

METAL MOLD



29839
Square-Shape 4-Prong Peg Setting with Milgrain, 1 CT stone (5.5×5.5mm), 7.7mm height, 14K Rose, \$129

METAL MOLD



2000041
Round-Shape Semi-Set Halo-Style Shank Setting, 1 CT center (6.5mm), 0.08 CTW, 7.8mm height, 14K White, 33, \$385. Mounting **2000041**, \$99.

METAL MOLD



2000043
Oval-Shape Semi-Set Halo-Style Shank Setting, 1 CT center (8×6mm), ¼ CTW, 7.8mm height, 14K Rose, 33, \$525. Mounting **2000043**, \$139.

METAL MOLD

NEW



2000042
Square-Shape Semi-Set Halo-Style Shank Setting, 1 CT center (5.5×5.5mm), ¼ CTW, 7.7mm height, 14K White, 33, \$459. Mounting **2000042**, \$115.

METAL MOLD



2000044
Cushion-Shape Semi-Set Halo-Style Shank Setting, 1¼ CT center (6×6mm), 0.08 CTW, 7.7mm height, 14K White, 33, \$375. Mounting **2000044**, \$95.

NEW



29972
Round-Shape Semi-Set Halo-Style 4-Prong Peg Setting, 1 CT center (6.5mm), 0.06 CTW, 9.9mm height, 14K White, 33, \$319. Mounting **29972**, \$85.



29775
Round-Shape Semi-Set 4-Prong Peg Setting, 1 CT center (6.5mm), ¼ CTW, 9.1mm height, 14K White, 33, \$735



29774
Round-Shape Semi-Set 6-Prong Peg Setting, 1 CT center (6.5mm), ¼ CTW, 5.4mm height, 14K White, 33, \$525



29643
Round-Shape Semi-Set 4-Prong Peg Setting, 1 CT center (6.5mm), 0.06 CTW, 6.79mm height, 14K White, 33, \$299. Mounting **29643**, \$149.



29815
Round-Shape French-Set Semi-Set 4-Prong Peg Setting, 1 CT center (6.5mm), ¼ CTW, 10.8mm height, 14K White, 33, \$615. Mounting **29815**, \$119.



29928
Oval-Shape French-Set Semi-Set Halo-Style 4-Prong Peg Setting, 1 CT center (8×6mm), ¼ CTW, 9.4mm height, 14K White, 33, \$819. Mounting **29928**, \$175.



29929
Marquise-Shape French-Set Semi-Set Halo-Style 4-Prong Peg Setting, ¼ CT center (9×4.5mm), ¼ CTW, 9.7mm height, 14K Yellow, 33, \$1,045. Mounting **29929**, \$165.

METAL MOLD



29930
Pear-Shape French-Set Semi-Set Halo-Style 3-Prong Peg Setting, 1 CT center (8.5×5.5mm), ¼ CTW, 9.7mm height, 14K White, 33, \$1,069. Mounting **29930**, \$159.



29228
Round-Shape 4-Prong Claw Peg Setting, 1 CT stone (6.5mm), 7.5mm height, 14K White, \$65

METAL MOLD



29882
Square-Shape 4-Prong Claw Peg Setting, 1 CT stone (5.5×5.5mm), 6.8mm height, 14K Yellow, \$55

METAL MOLD



29884
Pear-Shape 6-Prong Claw Peg Setting, 1 CT stone (8.5×5.5mm), 6.5mm height, 14K White, \$69

METAL MOLD



29881
Oval-Shape 4-Prong Claw Peg Setting, 1 CT stone (8×6mm), 6.7mm height, 14K White, \$59

METAL MOLD



29874
Round-Shape Semi-Set Halo-Style 4-Prong Peg Setting, 1 CT center (6.5mm), ¼ CTW, 7.8mm height, 14K Yellow, 33, \$935. Mounting **29874**, \$179.

METAL MOLD



29939
Oval-Shape Semi-Set Halo-Style 4-Prong Peg Setting, 1 CT center (8×6mm), ¼ CTW, 8.3mm height, 14K White, 33, \$949. Mounting **29939**, \$215.



29959
Square-Shape Semi-Set Halo-Style 4-Prong Peg Setting, 1 CT center (5.5×5.5mm), ¼ CTW, 7.4mm height, 14K White, 33, \$949. Mounting **29959**, \$169.

METAL MOLD



29946
Emerald-Shape Semi-Set Halo-Style 4-Prong Peg Setting, 1¼ CT center (7×5mm), ¼ CTW, 10.1mm height, 14K White, 33, \$925. Mounting **29946**, \$225.

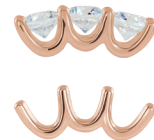
METAL MOLD

NEW



2000023
Round-Shape Three-Stone Shank Setting, ¾ CTW stone (4.1mm), 5.6mm height, 14K White, \$145

NEW



2000027
Round-Shape Three-Stone Shank Setting, ¾ CTW stone (4.1mm), 5.2mm height, 14K Rose, \$135



23351
Round-Shape Three-Stone Shank Setting, ½ CT center (5.2mm), ½ CTW, 6.3mm height, 14K White, \$159

NEW



29926
Round-Shape Semi-Set Halo-Style 4-Prong Peg Setting, 1 CT center (6.5mm), ¼ CTW, 9.7mm height, 14K White, 33, \$485. Mounting **29926**, \$129.



29801
Round-Shape Semi-Set 4-Prong Peg Setting, 1 CT center (6.5mm), ¼ CTW, 8.9mm height, 14K White, 33, \$1,029



29871
Round-Shape Semi-Set Halo-Style 4-Prong Peg Setting, 1 CT center (6.5mm), 0.06 CTW, 8.3mm height, 14K White, 33, \$379. Mounting **29871**, \$125.



29840
Round-Shape Semi-Set Halo-Style 4-Prong Peg Setting, 1 CT center (6.5mm), ¼ CTW, 8.3mm height, 14K Rose, 33, \$939. Mounting **29840**, \$205.

METAL MOLD

PEG SHANKS

SHANKS



A



E



J



N



S



W



AA



EE



B



F



K



P



T



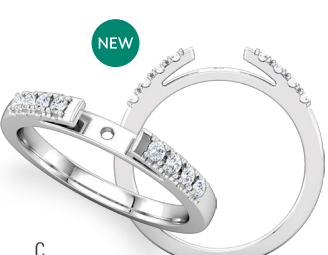
X



BB



FF



C



G



L



Q



U



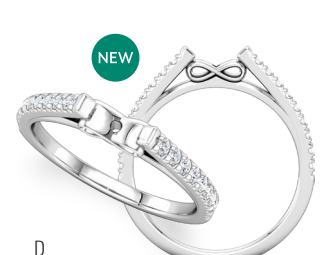
Y



CC



GG



D



H



M



R



V



Z



DD



HH

A. **SH716**
Peg Shank, 5.3mm span, 2.2x2.3mm shoulder, 14K Two-Tone, \$365

METAL MOLD

B. **SH742**
Diamond Criss-Cross Peg Shank, 3/4 CTW, 7.5x1.8mm shoulder, 14K Rose, \$1,359. Mounting **SH742**, \$489.

C. **SH731**
Diamond Peg Shank, 1/4 CTW, 5mm span, 2.4x3.2mm shoulder, 14K White, \$859. Mounting **SH731**, \$419.

D. **SH753**
Diamond Peg Shank, 1/4 CTW, 4.5mm span, 1.9x2.5mm shoulder, 14K White, \$315. Mounting **SH753**, \$315.

E. **SH751**
Infinity Peg Shank, 5.5mm span, 1.9x2.5mm shoulder, 14K White, \$305

F. **SH757**
Criss-Cross Peg Shank, 7.3x2mm shoulder, 14K White, \$555

G. **SH726**
Diamond Peg Shank, 1/4 CTW, 3.4mm span, 3x2.4mm shoulder, 14K White, \$1,055. Mounting **SH726**, \$435.

H. **SH754**
Diamond Peg Shank, 1/4 CTW, 4.9mm span, 1.8x2mm shoulder, 14K Yellow, \$1,105. Mounting **SH754**, \$269.

J. **SH720**
Peg Shank, 3.6mm span, 2.4x4.7mm shoulder, 14K White, \$359

K. **SH739**
Diamond Negative Space Peg Shank, 1/4 CTW, 3x1.9mm shoulder, 14K Yellow, \$1,055. Mounting **SH739**, \$465.

L. **SH733**
Diamond Peg Shank, 1/4 CTW, 4.3mm span, 5.6x3.9mm shoulder, 14K Rose, \$929. Mounting **SH733**, \$515.

M. **SH706**
French-Set Diamond Peg Shank, 1/2 CTW, 2.5x2.1mm shoulder, 14K White, \$1,325. Mounting **SH706**, \$315.

N. **SH752**
Heart Peg Shank, 4.6mm span, 5.58x3.37mm shoulder, 14K White, \$305

P. **SH741**
Diamond Bypass Peg Shank, 1/4 CTW, 4.7x2.3mm shoulder, 14K White, \$1,379. Mounting **SH741**, \$549.

Q. **SH713**
Diamond Peg Shank, 0.05 CTW, 5.1mm span, 1.6x3.4mm shoulder, 14K White, \$495. Mounting **SH713**, \$289.

R. **SH697**
Diamond Twisted Peg Shank, 1/4 CTW, 1.9x1.6mm shoulder, 14K Rose, \$879. Mounting **SH697**, \$265.

S. **SH738**
Open Shank for Multi-Stone Setting, 6.7mm span, 3.6x3.8mm shoulder, 14K Rose, \$335

T. **SH718**
Diamond Open Shank for Multi-Stone Setting, 0.06 CTW, 4.4mm span, 2.9x2.1mm shoulder, 14K White, \$629. Mounting **SH718**, \$389

U. **SH647**
French-Set Diamond Open Shank for 4-Prong Setting, 3/4 CTW, 2x1.9mm shoulder, 14K White, \$1,335. Mounting **SH647**, \$269.

V. **SH659**
French-Set Diamond Open Shank for 6-Prong Setting, 3/4 CTW, 2mm span, 2.5x2.8mm shoulder, 14K White, \$1,569. Mounting **SH659**, \$305.

W. **SH737**
Open Shank for Multi-Stone Setting, 12.3mm span, 2.1x2.4mm shoulder, 14K White, \$225

X. **SH717**
Diamond Bezel-Set Open Shank, 0.06 CTW, 7.04mm span, 2x2.2mm shoulder, 14K White, \$685. Mounting **SH717**, \$339

Y. **SH452**
Coined Comfort-Fit Open Shank for 4-Prong Setting, 3.3x3.2mm shoulder, 14K White, \$415

METAL MOLD DIE STRUCK

Z. **SH453**
Coined Comfort-Fit Shank for 6-Prong Setting, 3x3.7mm shoulder, 14K Yellow, \$389

METAL MOLD DIE STRUCK

AA. **SH736**
Open Shank for Multi-Stone Setting, 6.58mm span, 2.3x3.8mm shoulder, 14K White, \$275

BB. **SH732**
Diamond Flat-End Open Shank, 1/6 CTW, 5.07mm span, 2.3x2.8mm shoulder, 14K White, \$749. Mounting **SH732**, \$325.

CC. **SH459**
Coined Shank for 4-Prong Setting, 3x2.9mm shoulder, 14K Rose, \$459

DIE STRUCK

DD. **SH460**
Coined Open Shank for 6-Prong Setting, 3x2.7mm shoulder, 14K White, \$449

DIE STRUCK

EE. **SH651**
Sculptural Open Shank Mounting, 8mm span, 3.8x3.6mm shoulder, 14K White, \$305

FF. **SH735**
Diamond French-Set Open Shank for Multi-Stone Setting, 1/4 CTW, 9.6mm span, 1.9x2mm shoulder, 14K White, \$839. Mounting **SH735**, \$239.

GG. **SH454**
Comfort-Fit Coined Shank for 4-Prong Setting, 2.8x2.5mm shoulder, 14K White, \$439

METAL MOLD DIE STRUCK

HH. **SH183**
Heavyweight Coined Comfort-Fit Shank for 6-Prong Setting, 4x2.2mm shoulder, 14K White, \$485

METAL MOLD DIE STRUCK

Over the Rainbow

Add a dash of color with these stylish bands.



A. **122844** Round-Shape Seven-Stone Anniversary Band Mounting, 7- 2.5mm stones, 14K Yellow, size 7, \$429. Shown with rainbow colored genuine gemstones. | B. **123595** Round-Shape Bezel-Set Eternity Band Mounting, 17- 2.0mm stones, 14K White, size 6, \$465. Shown with rainbow colored genuine gemstones. | C. **122981** Round-Shape Channel-Set Anniversary Band Mounting, 10- 3mm stones, 14K Yellow, size 7, \$1,035. Shown with blue ombré colored genuine gemstones. | D. **120767** Round-Shape Anniversary Band Mounting, 11- 2.5mm stones, 14K White, size 7, \$689. Shown with rainbow colored genuine gemstones. | E. **123658** Round-Shape Anniversary Band Mounting, 7- 3.0mm stones, 14K Yellow, size 7, \$459. Shown with genuine pink sapphires. F. **123658** Round-Shape Anniversary Band Mounting, 7- 3.0mm stones, 14K Yellow, size 7, \$459. Shown with genuine rubies. | G. **123658** Round-Shape Anniversary Band Mounting, 7- 3.0mm stones, 14K Yellow, size 7, \$459. Shown with genuine pink tourmaline. | H. **Genuine Ruby**, Round, 3.0mm, AA, \$234.00 | J. **Genuine Yellow Sapphire**, Round, 3.0mm, AA, \$56.55 | K. **Forever One™ Moissanite**, Round, 3.0mm, Colorless-DEF, \$78.00 | L. **Genuine Blue Sapphire**, Round, 3.0mm, AA, \$165.75 | M. **Genuine Tsavorite Garnet**, Round, 3.0mm, AAA, \$106.95 | N. **Genuine Amethyst**, Round, 3.0mm, AA, \$13.05

3C



122981
Round-Shape Anniversary Band Mounting, 10- 3.0mm stones, 14K White, 32, size 7, \$1,035. Shown with rainbow colored genuine gemstones.
Available stone shapes:


3C



123658
Round-Shape Seven-Stone Anniversary Band Mounting, 7- 2.5mm stones, 14K Yellow, 32, size 7, \$439. Shown with genuine pink sapphires.
Available stone shapes:


3C



123595
Round-Shape Bezel-Set Eternity Band Mounting, 17- 2.0mm stones, 14K White, 32, size 6, \$418. Shown with rainbow colored genuine gemstones.
Available stone shapes:


NEW



123858
Diamond Anniversary Band, 3/8 CTW, 14K Rose, 26, 32, size 7, \$1,469. Mounting **123858**, \$355.

NEW



123916
Diamond Anniversary Band, 1 CTW, 14K White, 32, 124, size 7, \$3,329. Mounting **123916**, \$475.

NEW



123915
Diamond Anniversary Band, 3/4 CTW, 14K Yellow, 32, 26, size 7, \$2,335. Mounting **123915**, \$485.

NEW



123851
Diamond Anniversary Band, 1/8 CTW, 14K Yellow, 32, size 7, \$1,219. Mounting **123851**, \$559.

NEW



123852
Diamond Anniversary Band, 1/8 CTW, 14K Rose, 32, size 7, \$1,015. Mounting **123852**, \$505.

NEW



123921
Diamond Anniversary Band, 1/4 CTW, 14K White, 32, size 7, \$1,295. Mounting **123921**, \$479.

NEW



123830
Diamond Anniversary Band, 1 CTW, 14K White, 32, size 7, \$5,539. Mounting **123830**, \$679.

NEW



653556
Diamond Anniversary Band, 1/8 CTW, 14K Yellow, 603, size 6, \$1,725

NEW



123863
Diamond Anniversary Band, 1/2 CTW, 14K Rose, 32, size 7, \$1,545. Mounting **123863**, \$445.

Stone Codes: 26 Genuine Marquise Diamond, SI2-SI3, G-I, Natural | 32 Genuine Diamond SI2-SI3, G-I, Natural | 35 Genuine Diamond (Square Princess) SI2-SI3, G-H, Natural | 603 Genuine Round Diamond, SI, G-I, Natural



NEW

123840
Round-Shape Three-Stone Diamond Anniversary Band, 7/8 CTW, 14K White, 32, size 7, \$4,469. Mounting **123840**, \$619.



NEW

123896
Heart-Shape Three-Stone Diamond Anniversary Band, 3/4 CTW, 14K White, 32, size 7, \$4,309. Mounting **123896**, \$485.



NEW

123903
Round-Shape Three-Stone Diamond Anniversary Band, 1/2 CTW, 14K White, 32, size 7, \$1,969. Mounting **123903**, \$475.



NEW

123897
Diamond Anniversary Band, 3/4 CTW, 14K Yellow, 32, size 7, \$2,175. Mounting **123897**, \$359.



123441
Diamond Anniversary Band, 1/2 CTW, 14K White, 32, size 7, \$1,719. Mounting **123441**, \$655.



123802
Diamond Anniversary Band, 1/2 CTW, 14K Yellow, 32, size 7, \$1,665. Mounting **123802**, \$385.



123647
Diamond Anniversary Band, 1/2 CTW, 14K Rose, 21, 32, size 7, \$1,925. Mounting **123647**, \$525.



123611
Diamond Anniversary Band, 5/8 CTW, 14K White, 35, size 7, \$2,545. Mounting **123611**, \$475.



123573
Diamond Anniversary Band, 5/8 CTW, 14K Yellow, 21, size 7, \$1,565. Mounting **123573**, \$399.



123804
Diamond Anniversary Band, 1/5 CTW, 14K White, 32, size 7, \$1,535. Mounting **123804**, \$569.



123805
Diamond Anniversary Band, 1/5 CTW, 14K White, 32, size 7, \$1,939. Mounting **123805**, \$805.



123661
Diamond Anniversary Band, 1/5 CTW, 14K White, 32, size 7, \$1,529. Mounting **123661**, \$545.



3C

122877
Round-Shape Diamond Anniversary Band, 3/8 CTW, 14K White, 32, size 7, \$1,359. Mounting **122877**, \$375.

Available stone shapes:




NEW

123900
Diamond Anniversary Band, 1/2 CTW, 14K Rose, 32, size 7, \$1,869. Mounting **123900**, \$469.



3C

123655
Round-Shape Diamond Anniversary Band, 3/4 CTW, 14K White, 32, size 7, \$2,145. Mounting **123655**, \$399.

Available stone shapes:




NEW

123857
Diamond Anniversary Band, 3/8 CTW, 14K Rose, 32, size 7, \$1,499. Mounting **123857**, \$385.



123865
Diamond Anniversary Band, 1/3 CTW, 14K Yellow, 26, size 7, \$1,245. Mounting **123865**, \$365.



123859
Diamond Anniversary Band, 5/8 CTW, 14K Rose, 26, size 7, \$2,319. Mounting **123859**, \$445.



NEW

123870
Diamond Anniversary Band, 1 1/2 CTW, 14K Yellow, 26, 32, size 7, \$6,135. Mounting **123870**, \$805.



123864
Diamond Anniversary Band, 1/2 CTW, 14K White, 32, size 7, \$1,539. Mounting **123864**, \$485.



123801
Diamond Anniversary Band, 3/8 CTW, 14K Yellow, 32, size 7, \$2,085. Mounting **123801**, \$609.



123695
Diamond Eternity Band, 0.08 CTW, 14K White, 32, size 7, \$755. Mounting **123695**, \$469.



123696
Diamond Eternity Band, 0.05 CTW, 14K White, 32, size 7, \$845. Mounting **123696**, \$485.



123777
Diamond Eternity Band, 3/4 CTW, 14K White, 32, size 7, \$3,245. Mounting **123777**, \$435.

Celebrate With Style

Choose from on-trend anniversary and eternity designs.



- A. **122844** Diamond Anniversary Band, 3/4 CTW, 32, size 7, 14K Yellow, \$1,405. Mounting **122844**, \$429. | B. **123704** Diamond Anniversary Band, 0.08 CTW, 32, size 7, 14K Rose, \$909. Mounting **123704**, \$389.
- C. **123657** Diamond Eternity Band, 3/4 CTW, 21, size 7, 14K Yellow, \$1,669. Mounting **123657**, \$289. | D. **123802** Diamond Anniversary Band, 1/2 CTW, 32, size 7, 14K Rose, \$1,669. Mounting **123802**, \$385.
- E. **123863** Diamond Anniversary Band, 1/2 CTW, 32, size 7, 14K White, \$1,565. Mounting **123863**, \$469.



123608
Diamond French-Set Anniversary Band, 1/2 CTW, 14K Yellow, 23, 32, size 7, \$1,879. Mounting **123608**, \$369.



NEW

123836
Diamond Anniversary Band, 1 CTW, 14K Rose, 21, 32, size 7, \$3,809. Mounting **123836**, \$649.



123853
Diamond Anniversary Band, 3/4 CTW, 14K Yellow, 23, 35, size 7, \$2,575. Mounting **123853**, \$459.



3C

123882
Diamond French-Set Anniversary Band, 1/2 CTW, 14K White, 32, size 7, \$885. Mounting **123882**, \$459.

Available stone shapes:



3C

123881
Diamond French-Set Anniversary Band, 3/4 CTW, 14K White, 32, size 7, \$1,625. Mounting **123881**, \$585.

Available stone shapes:



3C

123883
Diamond French-Set Anniversary Band, 1/2 CTW, 14K White, 32, size 7, \$1,675. Mounting **123883**, \$439.

Available stone shapes:



NEW

123856
Diamond Anniversary Band, 0.08 CTW, 14K Rose, 32, size 7, \$899. Mounting **123856**, \$505.



NEW

123855
Diamond Anniversary Band, 1/6 CTW, 14K White, 32, size 7, \$1,165. Mounting **123855**, \$655.



NEW

123854
Diamond Anniversary Band, 1/6 CTW, 14K Yellow, 32, size 7, \$1,519. Mounting **123854**, \$469.



NEW

123797
Diamond Gypsy-Set Anniversary Band, 1/6 CTW, 14K Rose, 32, size 7, \$1,149. Mounting **123797**, \$375.



123948
Diamond Anniversary Band, 0.08 CTW, 14K Yellow, 32, size 7, \$719. Mounting **123948**, \$425.



123800
Diamond Anniversary Band, 1/10 CTW, 14K Rose, 32, size 7, \$845. Mounting **123800**, \$565.



123492
Diamond Anniversary Band, 1/4 CTW, 14K White, 32, size 7, \$1,079. Mounting **123492**, \$409.



123491
Diamond Anniversary Band, 1/4 CTW, 14K White, 32, size 7, \$1,085. Mounting **123491**, \$415.



123502
Diamond Anniversary Band, 3/8 CTW, 14K White, 26, 32, size 7, \$1,319. Mounting **123502**, \$319.



123812
Diamond Anniversary Band, 1/4 CTW, 14K Yellow, 32, size 7, \$1,485. Mounting **123812**, \$629.



123798
Diamond Anniversary Band, 1/3 CTW, 14K White, 32, size 7, \$1,535. Mounting **123798**, \$549.



123490
Diamond Anniversary Band, 1/3 CTW, 14K White, 35, size 7, \$1,509. Mounting **123490**, \$479.

Stone Codes: 23 Genuine Tapered Baguette Diamond SI2-SI3, G-I, Natural | 26 Genuine Marquise Diamond, SI2-SI3, G-I, Natural
32 Genuine Round Diamond SI2-SI3, G-I, Natural | 35 Genuine Square Diamond SI2-SI3, G-H, Natural



123589
Round-Shape Three-Stone Diamond Anniversary Band, 7/8 CTW, 14K Rose, 32, size 7, \$4,419. Mounting **123589**, \$495. Shown with **LDIA-GEN-99977-G** 1/2, D, VS2. Available stone shapes:



123477
Round-Shape Three-Stone Diamond Anniversary Band, 7/10 CTW, 14K White, 32, size 7, \$4,689. Mounting **123477**, \$625. Shown with **LDIA-GEN-99940-G** 1/4, G, SI1. Available stone shapes:



123341
Round-Shape Three-Stone Diamond Anniversary Band, 3/4 CTW, 14K Rose, 32, size 7, \$4,125. Mounting **123341**, \$509. Shown with **LDIA-GEN-98920-G** 1/2 CT, E, VS1. Available stone shapes:



123655
Diamond Anniversary Band, 1 1/2 CTW, 14K Yellow, 32, size 7, \$3,185. Mounting **123655**, \$449. Available stone shapes:



123629
Diamond Anniversary Band, 1/2 CTW, 14K White, 32, size 7, \$2,645. Mounting **123629**, \$349. Available stone shapes:



123594
Diamond Anniversary Band, 1/3 CTW, 14K Rose, 26, size 7, \$1,359. Mounting **123594**, \$365. Available stone shapes:



123598
Emerald-Shape Three-Stone Diamond Anniversary Band, 1 CTW, 14K White, 125, size 7, \$4,915. Mounting **123598**, \$555. Available stone shapes:



123435
Emerald-Shape Three-Stone Diamond Anniversary Band, 1 CTW, 14K Yellow, 125, size 7, \$4,885. Mounting **123435**, \$549. Available stone shapes:



123350
Emerald-Shape Three-Stone Diamond Anniversary Band, 1 CTW, 14K White, 125, size 7, \$4,799. Mounting **123350**, \$535. Available stone shapes:



123643
Round-Shape Eternity Band, 2 1/2 CTW, 14K Rose, 32, size 7, \$6,239. Mounting **123643**, \$495. Available stone shapes:



123628
Diamond Eternity Band, 1 1/2 CTW, 14K White, 26, 32, size 7, \$4,405. Mounting **123628**, \$375. Available stone shapes:



123597
Diamond Channel-Set Eternity Band, 1 1/2 CTW, 14K Yellow, 32, size 7, \$3,819. Mounting **123597**, \$475. Available stone shapes:

NEW



123874
Round-Shape Seven-Stone Diamond Anniversary Band, 3/4 CTW, 14K Rose, 32, size 7, \$2,335. Mounting **123874**, \$489. Available stone shapes:



123658
Round-Shape Seven-Stone Diamond Anniversary Band, 3/4 CTW, 14K White, 32, size 7, \$2,335. Mounting **123658**, \$489. Available stone shapes:



123486
Pear-Shape Five-Stone Diamond Anniversary Band, 3/4 CTW, 14K Yellow, 117, size 7, \$2,975. Mounting **123486**, \$415. Available stone shapes:

GIA® Melee Analysis Service

Stuller's D-to-Z melee diamonds are screened and color graded by GIA (Gemological Institute of America®).

Visit Stuller.com/AboutDiamonds to learn more.

Melee Analysis
by **GIA**®



Enchanting Elegance

A band for every hand



A. **51695** Rope Band, 14K Rose, size 7, \$199 | B. **51868** Rope Band, 14K White, size 7, \$389 | C. **51823** Woven-Design Band, 14K Yellow, size 7, \$299 | D. **51765** Design-Engraved Band, 14K White, size 7, \$479



A



C



E



B



D



F



51867
Leaf Design Band, 3mm width, 14K Rose, size 7, \$545



51794
Infinity Band, 3mm width, 14K White, size 7, \$769



51788
Woven-Design Band, 1.45mm width, 14K Rose, size 7, \$455



51857
Celtic-Inspired Band with Milgrain, 3mm width, 14K Yellow, size 7, \$445



51853
Celtic-Inspired Band, 3.2mm width, 14K White, size 7, \$485



51766
Floral Band, 3mm width, 14K Rose, size 7, \$529



51808
Geometric Band, 2mm width, 14K White, size 7, \$355



51802
Watch Strap Band, 2mm width, 14K Yellow, size 7, \$535



51826
Geometric Band, 4mm width, 14K White, size 7, \$849

A. **51842**
Floral Band, 2.5mm width, size 7, 14K White, \$549
14K Yellow, \$565
14K Rose, \$569

B. **123727**
Diamond Three-Stone Comfort-Fit Band, size 7, 4mm width, 1/2 CTW, 32, 14K White, \$1,595.
Mounting **123727**, \$1,135.
2.5mm width, 0.05 CTW, 32, 14K Yellow, \$725.
Mounting **123727**, \$539.
2.5mm width, 0.05 CTW, 32, 14K Rose, \$735.
Mounting **123727**, \$545.

C. **51881**
Sculptural Leaf Design Band, 2mm width, size 7, 14K White, \$385
14K Yellow, \$395
14K Rose, \$395

D. **123726**
Diamond Three-Stone Comfort Fit Band, size 7, 4mm width, 1/2 CTW, 32, 14K White, \$1,439.
Mounting **123726**, \$975.
2.5mm width, 0.05 CTW, 32, 14K Yellow, \$625.
Mounting **123726**, \$439.
2.5mm width, 0.05 CTW, 32, 14K Rose, \$629.
Mounting **123726**, \$445.

E. **51872**
Woven-Design Band, 3mm width, size 7, 14K White \$705
14K Yellow, \$725
14K Rose, \$729

F. **653540**
Diamond-Accented Band, size 7, 4mm width, 1/2 CTW, 544, 14K White, \$3,119
3mm width, 1/2 CTW, 544, 14K Yellow, \$2,585
2mm width, 1/2 CTW, 544, 14K Rose, \$2,265

Crafted With Excellence

Find the right band for him.

A. **51876** Comfort-Fit Design-Engraved Band, 6mm width, 14K Two-Tone, size 10, \$1,359
 B. **123860** Diamond Vertical Band with Satin Finish, 1/10 CTW, 8.1mm width, 14K White, 32, size 10, \$2,105. Mounting **123860**, \$1,795. | C. **653540** Diamond-Accented Band, 3/4 CTW, 14K White, 544, size 10, \$4,979 | D. **51897** Grooved Edge Band, 5mm width, 14K White, size 10, \$1,355
 E. **51890** Woven-Design Band, 4.64mm width, 14K Yellow, size 10, \$875 | F. **51948** Grooved Comfort-Fit Band, 14K White, size 11, \$1,219 | G. **51929** Patterned Comfort-Fit Band, 14K White, size 10, \$1,005



51981
 Beveled-Edge Comfort-Fit Band with Satin Finish, 6mm width, 14K Two-Tone, size 10, \$1,379



51983
 Comfort-Fit Design-Engraved Band, 6mm, 14K Two-Tone, size 10, \$1,289



51985
 Patterned Comfort-Fit Band, 6mm, 14K Yellow, size 10, \$1,365



123860
 Vertical Diamond Accented Band with Satin Finish, 0.08 CTW, 8mm width, 14K Rose, 32, size 10, \$2,105. Mounting **123860**, \$1,895.



123727
 Diamond Three-Stone Comfort Fit Band, 1/4 CTW, 6mm width, 14K White, 32, size 10, \$2,605. Mounting **123727**, \$589.



123307
 Diamond Channel-Set Band, 3/8 CTW, 6mm width, 14K Rose, 32, size 10, \$2,379. Mounting **123307**, \$1,199.



NEW
51927
 Vertical Ridged Band, 6mm width, 14K White, size 10, \$1,085



NEW
51929
 Patterned Comfort-Fit Band, 5mm width, 14K White, size 10, \$1,005



NEW
51949
 Patterned Comfort-Fit Band, 6mm width, 14K White, size 10, \$1,139



NEW
653540
 Diamond Band with Satin Finish, 3/4 CTW, 6mm width, 14K White, 544, size 10, \$4,979



NEW
653541
 Diamond Band with Satin Finish, 3/4 CTW, 5mm width, 14K Rose, 544, size 10, \$4,185



NEW
653541
 Diamond Band with Satin Finish, 1/2 CTW, 6mm width, 14K White, 544, size 10, \$4,979



NEW
51915
 Rope Pattern Edge Fancy Band, 6mm width, 14K Rose, size 10, \$1,659



NEW
MGRF10
 Flat-Edge Comfort-Fit Band with Milgrain, 6mm width, 14K Yellow, size 10, \$975



NEW
CC10
 Concave Band, 7mm width, 14K White, size 10, \$1,205



51892
 Celtic-Inspired Band, 7mm width, 14K White, size 10, \$1,229



51873
 Celtic-Inspired Band, 6mm width, 14K Yellow, size 10, \$1,359



51862
 Woven-Design Band, 7mm width, 14K White, size 10, \$1,419

Stone Codes: 26 Genuine Marquise Diamond, SI2-SI3, G-I, Natural | 32 Genuine Round Diamond, SI2-SI3, G-I, Natural
 544 Genuine Round Diamond SI, H+, Natural



T51955
Coin-Edge Comfort-Fit Band with White Oak Wood Inlay, 8mm width, Black Titanium, size 10, \$159



T51959
Beveled-Edge Comfort-Fit Band with Teak Wood Inlay, 8mm width, Black Titanium, size 10, \$159



T51960
Beveled-Edge Comfort-Fit Band with Ash Wood Inlay, 8mm width, Black Titanium, size 10, \$159



TAR51908
Flat Grooved Band with Black PVD, 8mm width, 18K Rose Gold-Plated Tungsten, size 10, \$329



TAR51909
Grooved Band, 8mm width, 18K Rose Gold-Plated Tungsten, size 10, \$329



TAR51906
Band with Imitation Meteorite Inlay, 8mm width, 18K Rose Gold-Plated Tungsten, size 10, \$329



T51898
Comfort-Fit Pattern Band, 8mm width, Black Titanium, size 10, \$159



T51899
Comfort-Fit Pattern Band, 8mm width, Black Titanium, size 10, \$159



T51957
Beveled-Edge Comfort-Fit Band with Ebony Wood Inlay, 8mm width, Black Titanium, size 10, \$159



TAR51900
Grooved Band with Blue Enamel Inlay, 6mm width, Tungsten, size 10, \$329



TAR51901
Band with Black Carbon Fiber Inlay, 8mm width, Tungsten, size 10, \$329



TAR51902
Blue Enamel Band with Black Carbon Fiber Inlay, 8mm width, Enameled Tungsten, size 10, \$329



COR51952
Flat-Edge Comfort-Fit Band with Brush Finish, 8mm width, Cobalt, size 10, \$195



COR51951
Beveled-Edge Comfort-Fit Band with Satin Finish, 7mm width, Cobalt, size 10, \$195



COR51954
Band with Black Cable Inlay, 7mm width, Cobalt, size 10, \$195



TAR51912
Band with Imitation Meteorite and Carbon Fiber Inlay, 8mm width, Tungsten, size 10, \$329



TAR51919
Band with Imitation Meteorite and Carbon Fiber Inlay, 8mm width, Tungsten, size 10, \$329



TAR51920
Band with Imitation Meteorite and Wood Inlay, 8mm width, Tungsten, size 10, \$329

Ring of Trust

A wedding band. The ultimate symbol of trust.

Your customer trusts you to find the perfect band. You can trust us to get that band to you just when you need it with our massive selection and next-day delivery.

Find what you need at Stuller.com/WeddingBands.

Featuring items 51794, 51745, 51622, 51817, and 51716



3C WEDDING BANDS

3C

123307
Round-Shape Channel-Set Band,
22- 1.7mm stones, 6mm width,
14K White, size 11.
Mounting **123307**, \$1,235.

Available stone shapes:



Diamond (3/8 CTW)
32, \$2,459



Black Diamond (3/8 CTW)
32, \$1,899



Genuine Blue Sapphire
67, \$2,509

3C

9853
Round-Shape Channel-Set Band,
1- 3.0, 2- 2.8, 2- 2.0mm stones,
6.6mm width, 14K White,
size 11. Mounting **9853**, \$1,819.

Available stone shapes:



Diamond (1/2 CTW)
32, \$2,659



Black Diamond (1/2 CTW)
32, \$2,149



Genuine Blue Sapphire
67, \$2,395

3C NEW

9857
Round-Shape Channel-Set Band,
3- 3.0mm stones, 5.9mm width,
14K Rose, size 11.
Mounting **9857**, \$1,579.

Available stone shapes:



Diamond (1/2 CTW)
32, \$2,415



Black Diamond (1/2 CTW)
32, \$1,885



Genuine Blue Sapphire
67, \$2,165

3C

123522
Round-Shape Channel-Set Band,
3- 3.0mm stones, 6.5mm width,
14K White, size 11.
Mounting **123522**, \$2,265.

Available stone shapes:



Diamond (1/2 CTW)
32, \$3,075



Black Diamond (1/2 CTW)
32, \$2,545



Genuine Blue Sapphire
67, \$2,825

CLASSIC BANDS

NEW

MGRF10
Milgrain Flat Comfort-Fit Band

| mm Width | 3 | 5 | 7 |
|-------------|-------|-------|---------|
| Finger Size | 10 | 10 | 10 |
| 14K White | \$465 | \$815 | \$1,115 |



IRE10

Comfort-Fit Inside Round
Edge Band

| mm Width | 3 | 5 | 7 |
|-------------|-------|-------|---------|
| Finger Size | 10 | 10 | 10 |
| 14K Yellow | \$409 | \$795 | \$1,045 |



KER10

Knife-Edge Comfort-Fit Band

| mm Width | 3 | 5 | 7 |
|-------------|-------|-------|---------|
| Finger Size | 10 | 10 | 10 |
| 14K Rose | \$475 | \$829 | \$1,435 |



NEW

CC10
Concave Band, 7mm width

| Metal Quality/Color | 14K White | 14K Yellow | 14K Rose |
|---------------------|-----------|------------|----------|
| Finger Size 10 | \$1,205 | \$1,219 | \$1,235 |



Personalize your band with your own handwritten message.

To see all of our personalized engraving options,
visit [Stuller.com/Engraving](https://www.stuller.com/Engraving).



Above, top to bottom: **123908** Square-Shape Semi-Set Engagement Ring, 1 CT center (5.5×5.5mm), ½ CTW, 14K White, 21, 38, 32, size 7, \$3,309. Mounting **123908**, \$715. **123908** Matching Diamond Band, ½ CTW, 14K White, 23, 32, size 7, \$795. Mounting **123908**, \$389. | **51915** Rope Patterned Edge Fancy Band, 14K White, size 11, \$1,669
Front cover, clockwise from left: **51927** Vertical Ridged Band, 14K White, size 11, \$1,115 | **123934** Emerald-Shape Solitaire Engagement Ring Mounting, 1¼ CT stone (8×6mm), 14K Rose, size 7, \$639 | **123948** Diamond Anniversary Band, 0.08 CTW, 14K Yellow, 32, size 7, \$719. Mounting **123948**, \$425. | **123868** Diamond Anniversary Band, ¼ CTW, 14K Yellow, 32, size 7, \$1,159. Mounting **123868**, \$555. | **Genuine Morganite**, Emerald/Octagon, 8×6mm, AA, \$1,462.50

All prices are suggested retail based on \$1,300 gold, \$1,000 platinum, \$1,000 palladium, and \$18 silver and are subject to change without notice. | Visit Stuller.com for complete product selections, current pricing, and availability. Items are shown larger than actual size.

10/2018 MKTG MEDIA: 9983

S STULLER

Stuller.com | 800 877 7777